



## Specifications

Max. Vacuum Level	-86kPa
Max. Vacuum flow rate	35l/m
Air supply pressure	4-6bar Max.7bar
Air supply type	Dry compressed air

## How to Order

**ABM5** x **5** - **4** **V**  
①                      ②                      ③                      ④

### ① Model

ABM5
ABM10

### ② Vacuum stack

2, 3, 4, 5, 6, 7, 8, 9, 10
11, 12, 13, 14, 15, 16

### ③ Vacuum port, inner dia. of tube

2-Φ2
4-Φ4

### ④ Sealing

No mark-Standard(NBR)
V-VITON
E-EPDM

## Features

☆ This vacuum pump uses individual pumps to make up the complete unit, each pump is in itself a multistage ejector unit. Each individual pump can be stacked together this creating a modular manifold based system. It can be operated using just one control valve whilst retaining individual vacuum lines separate to one another, therefore if any leakage or surface deformation occurs and one pad loses its vacuum, it does not effect the vacuum level in the other pads. Pumps can be stacked up from 2-16 unit depending upon requirements. The pumps can have seal material options of Viton® & EPDM for corrosive and acidic applications.

Remark: ABM5-the most 16 stacks (can use 2 silencers between 12-16 stacks)  
ABM10-the most 12 stacks (can use 2 silencers between 6-12 stacks)

## Vacuum flow(l/min)at different vacuum levels(-kPa)

Model	Vacuum flow(l/min)at different vacuum levels(-kPa)								
	0	10	20	30	40	50	60	70	80
ABM5x1	27	15	12.5	11	10	7.5	5.5	2	0.6
ABM10x1	35	28	24	22	18	15	11	5	1.35

## Evacuation time(s/l)to reach different vacuum levels(-kPa)

Model	Evacuation time(s/l)to reach different vacuum levels(-kPa)								
	10	20	30	40	50	60	70	80	
ABM5x1	0.2	0.59	1.10	1.58	2.4	3.52	5.3	10.25	
ABM10x1	0.12	0.28	0.60	0.81	1.18	1.82	2.65	5.21	

Model	Max. Vacuum Level -kPa	Max. Vacuum flow l/min	Air Consumption l/min	Min tube inner $\Phi$ (within 2m)		
				Air supply	Vacuum	Exhaust
ABM5x2	86	25x2	29-41	>2	>2.5	3/8x1
ABM5x3		25x3	44-64	>2	>2.5	3/8x1
ABM5x4		25x4	61-85	>4	>2.5	3/8x1
ABM5x5		25x5	71-104	>4	>2.5	3/8x1
ABM5x6		25x6	89-125	>4	>2.5	3/8x1
ABM5x7		25x7	104-145	>4	>2.5	3/8x1
ABM5x8		25x8	120-168	>6	>2.5	3/8x1
ABM5x9		25x9	132-190	>6	>2.5	3/8x1
ABM5x10		25x10	148-211	>6	>2.5	3/8x1
ABM5x11		25x11	165-232	>6	>2.5	3/8x1
ABM5x12		25x12	180-252	>6	>2.5	3/8x2
ABM5x13		25x13	195-275	>6	>2.5	3/8x2
ABM5x14		25x14	208-293	>4	>2.5	3/8x2
ABM5x15		25x15	225-316	>4	>2.5	3/8x2
ABM5x16		25x16	241-335	>4	>2.5	3/8x2
ABM10x2		86	32x2	61-85	>4	>4
ABM10x3	32x3		91-125	>4	>4	3/8x1
ABM10x4	32x4		121-167	>6	>4	3/8x1
ABM10x5	32x5		151-212	>6	>4	3/8x1
ABM10x6	32x6		185-255	>6	>4	3/8x2
ABM10x7	32x7		211-295	>8	>4	3/8x2
ABM10x8	32x8		241-335	>8	>4	3/8x2
ABM10x9	32x9		271-376	>10	>4	3/8x2
ABM10x10	32x10		301-421	>10	>4	3/8x2
ABM10x11	32x11		332-463	>10	>4	3/8x2
ABM10x12	32x12		361-505	>10	>4	3/8x2



## Specifications

Max. Vacuum level	-92kPa
Max. Vacuum flow rate	32l/m
Air supply pressure	4-6bar Max.7bar
Air supply type	Dry compressed air

## How to Order

**ABX5 x 5 - 4 V**  
①            ②            ③            ④

### ① Model

ABX5
ABX10

### ② Vacuum stack

2, 3, 4, 5, 6, 7, 8, 9, 10
11, 12, 13, 14, 15, 16

### ③ Vacuum port, inner dia. of tube

2-Φ2
4-Φ4

### ④ Sealing

No mark-Standard(NBR)
V-VITON
E-EPDM

## Features

☆ This vacuum pump uses individual pumps to make up the complete unit, each pump is in itself a multistage ejector unit. It has the same external dimensions to that of the ABX minimultiple pump, however the internal ejector system is different to enable higher levels of vacuum to be achieved. Each individual pump can be stacked together this creating a modular manifold based system.

It can be operated using just one control valve whilst retaining individual vacuum lines separate to one another, therefore if any leakage or surface deformation occurs and one pad loses its vacuum, it does not effect the vacuum level in the other pads. Pumps can be stacked up from 2-16 unit depending upon requirements. The pumps can have seal material options of Viton® & EPDM for corrosive and acidic applications.

Remark: ABX5-the most 16 stacks (can use 2 silencers between 12-16 stacks)  
ABX10-the most 12 stacks (can use 2 silencers between 6-12 stacks)

## Vacuum flow(l/min)at different vacuum levels(-kPa)

Model	ABX series Vacuum flow(l/min)at different vacuum levels(-kPa)									
	0	10	20	30	40	50	60	70	80	90
ABX5x1	25	14	10	9	7.5	6	4	2.8	1.5	0.44
ABX10x1	32	21	18	16	14	11	9.5	5.5	2.5	1.1

## Evacuation time(s/l)to reach different vacuum levels(-kPa)

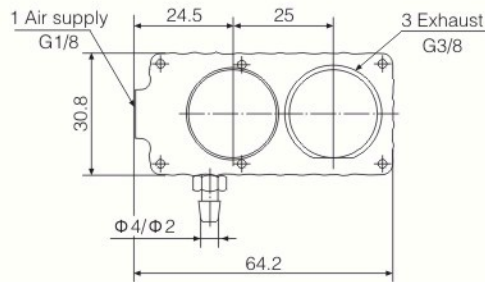
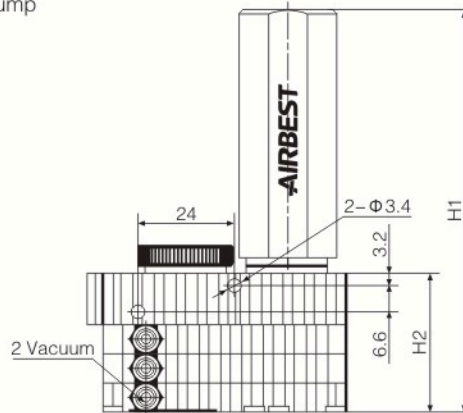
Model	ABX series Evacuation time(s/l)to reach different vacuum levels(-kPa)									
	10	20	30	40	50	60	70	80	90	
ABX5x1	0.21	0.81	1.52	2.35	3.48	4.85	6.57	10.5	19.27	
ABX10x1	0.14	0.40	0.78	1.22	1.77	2.4	3.3	4.95	9.62	



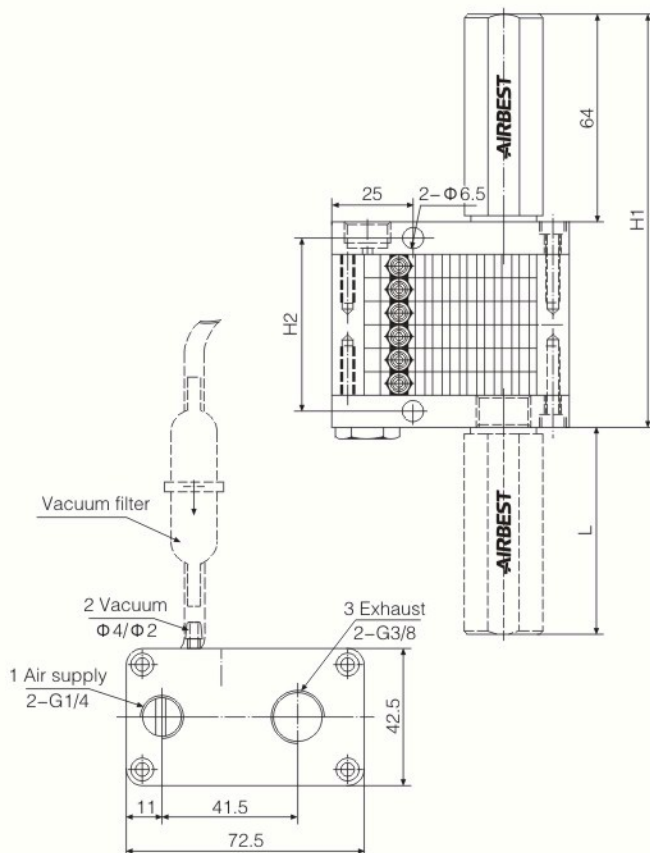
Model	Max. Vacuum Level -kPa	Max. Vacuum flow l/min	Air Consumption l/min	Min tube inner $\Phi$ (within 2m)		
				Air supply	Vacuum	Exhaust
ABX5x2	92	23x2	43-49	>2	>5	3/8x1
ABX5x3		23x3	65-73	>2	>8	3/8x1
ABX5x4		23x4	85-96	>4	>10	3/8x1
ABX5x5		23x5	106-121	>4	>12	3/8x1
ABX5x6		23x6	130-144	>4	>12	3/8x1
ABX5x7		23x7	151-167	>4	>12	3/8x1
ABX5x8		23x8	173-193	>6	>12	3/8x1
ABX5x9		23x9	195-217	>6	>10	3/8x1
ABX5x10		23x10	215-241	>6	>8	3/8x1
ABX5x11		23x11	238-265	>6	>8	3/8x1
ABX5x12		23x12	260-289	>6	>10	3/8x2
ABX5x13		23x13	281-313	>6	>12	3/8x2
ABX5x14		23x14	303-335	>4	>12	3/8x2
ABX5x15		23x15	325-361	>4	>12	3/8x2
ABX5x16		23x16	346-385	>4	>12	3/8x2
ABX10x2		92	32x2	87-96	>4	>4
ABX10x3	32x3		130-145	>4	>4	3/8x1
ABX10x4	32x4		173-193	>6	>4	3/8x1
ABX10x5	32x5		215-241	>6	>4	3/8x1
ABX10x6	32x6		260-288	>6	>4	3/8x2
ABX10x7	32x7		303-337	>6	>4	3/8x2
ABX10x8	32x8		346-385	>8	>4	3/8x2
ABX10x9	32x9		389-433	>10	>4	3/8x2
ABX10x10	32x10		433-481	>10	>4	3/8x2
ABX10x11	32x11		476-529	>10	>4	3/8x2
ABX10x12	32x12		519-578	>10	>4	3/8x2

**Dimensions (mm)**

ABM/ABX Combined Type Vacuum Pump



ABM5(10) ABX5(10)	H1	H2
2layer	92	28
3layer	99	35



ABM5(10) ABX5(10)	H1	H2
4 Layer	113	39
5 Layer	121	47
6 Layer	128	54
7 Layer	135	61
8 Layer	142	68
9 Layer	150	76
10 Layer	157	83
11 Layer	164	90
12 Layer	172	98
13 Layer	179	105
14 Layer	186	112
15 Layer	194	120
16 Layer	201	127

Vacuum Pumps

- ABM
- ABX
- ABM/ABX Combined type
- AM
- AL
- AH
- AM Combined type
- AL Combined type
- AH Combined type
- AZL112
- AZL212
- ACP
- ACPF
- ACV
- AZH
- AZU
- ASBP