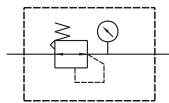


# MAR310 series Stainless steel #316 type

AIR UNITS (R. UNIT)



## Specification:

Model	MAR310	
Bore No.	8A	10A
Port size	PT 1/4	PT 3/8
Medium	Air	
Operating pressure range	0~9.9kgf/cm <sup>2</sup> (0~0.99MPa)	
Proof pressure	15kgf/cm <sup>2</sup> (1.5MPa)	
Effective orifice	25 mm <sup>2</sup>	34 mm <sup>2</sup>
Regulated pressure range	0.5~8.5kgf/cm <sup>2</sup> (0.05~0.85MPa)	
Ambient temperature	-5~+60°C (No freezing)	
Attachment	Bracket	
Option	Pressure gauge	
Weight	1000 g	

## Order example:

**MAR310 – 8A – C – BSP**

MODEL

BORE SIZE  
8A : PT 1/4  
10A : PT 3/8

PRESSURE  
GAUGE  
(PG-40)

PORT THREAD  
Blank: PT thread  
BSP: BSP thread  
NPT: NPT thread

