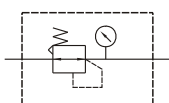


MAR900 series

AIR UNITS (R. UNIT)



Symbol:



- MAR900 reducing the system pressure to a desired level and maintain it at a constant level despite change in inlet pressure and changes in downstream flow requirements.

Specification:

Model	MAR900
Bore No.	40A
Port size	PT 1 1/2
Medium	Air
Operating pressure range	0~9.9 kgf/cm ² (0~0.99 MPa)
Regulated pressure range	0~8.8 kgf/cm ² (0~0.88 MPa)
Ambient temperature	0~+80℃ (No freezing)
Standard nominal flow rate (※)	11000 ℓ/min
Attachment	Pressure gauge (PG-50)
Weight	1208 g

※ Flow is at 10kgf/cm² supply pressure and 1kgf/cm² pressure drop of 6kgf/cm² of secondary pressure.

Order example:

MAR900 — 40A — BSP

MODEL

BORE SIZE
40A: PT 1 1/2

PORT THREAD
Blank: PT thread
BSP: BSP thread
NPT: NPT thread

