

MVSB-188 series

SOLENOID VALVE



Specification:

Model	4E1, 4E2	4E2C.P.R.
Bore No.	8A	
Port size	PT 1/4	
No. of port	5	
No. of position	2	3
Medium	Air	
Operating pressure range	1.5~8 kgf/cm ²	2~7 kgf/cm ²
Proof pressure	10 kgf/cm ²	
Effective orifice	15 mm ²	18 mm ²
Response time	30 ms	25 ms
Ambient temperature	- 5~+ 50℃ (No freezing)	
Voltage	AC110V, AC220V (50/60)Hz, DC24V	
Power consumption	AC=2.1/1.8VA, DC=1.6W	
Available voltage range	± 10%	
Insulation class	B class	
Weight	106 g, 145 g	150 g

Order example of valve:

MVSB – 188M – 4E2C – AC110 – L – BSP

MODEL

BODY WIDTH

Blank: body ported type
M: manifold type

4: 4way

E1: Single Solenoid
E2: Double Solenoid

C: Closed center
P: Pressure center
R: Exhaust center
(Only for 4E2 type)

VOLTAGE
AC220V(50/60)Hz
AC110V(50/60)Hz
DC24V

Blank: Lead wire
D: DIN connector
L: Lead wire with LED indicator

PORT THREAD
Blank: PT thread
BSP: BSP thread
NPT: NPT thread
(Only for body ported type)

Order example of manifold:

MVSB – 188M – 5M3 – BSP

MODEL

Blank: body ported type
M: manifold type

MANIFOLD
5B: for body ported type
5M: for manifold type

MANIFOLD NUMBER
1, 2, 3...

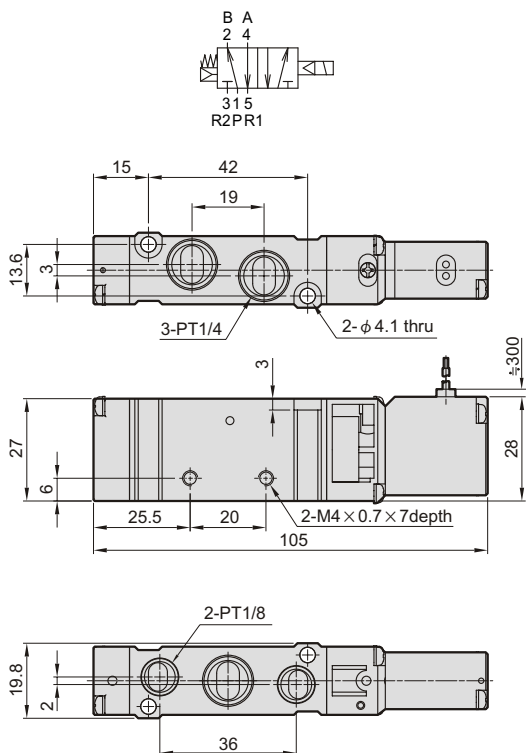
PORT THREAD
Blank: PT thread
BSP: BSP thread
NPT: NPT thread

MVSB-188 Dimensions

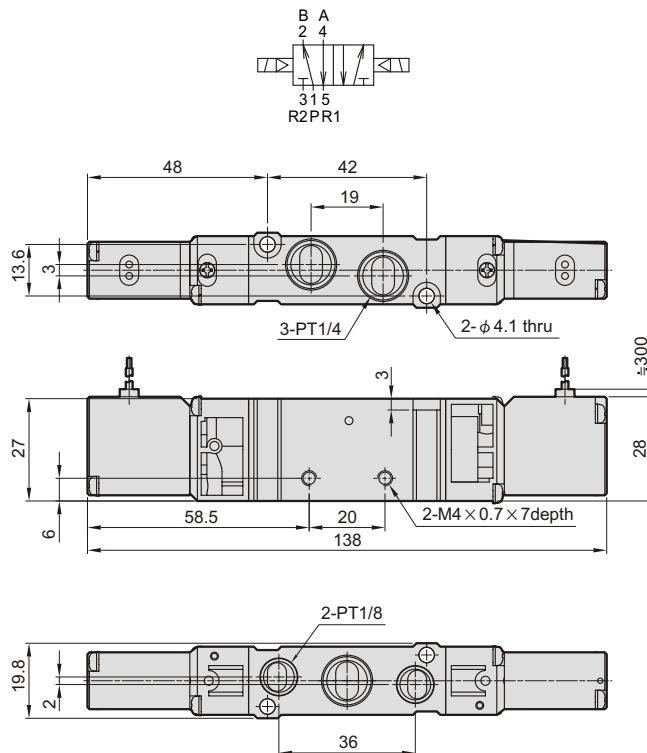
SOLENOID VALVE



MVSB-188-4E1

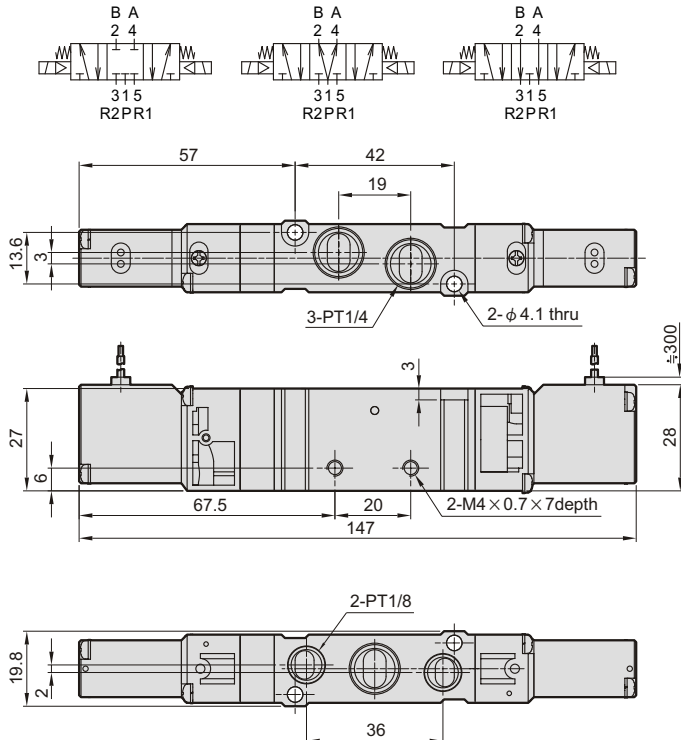


MVSB-188-4E2

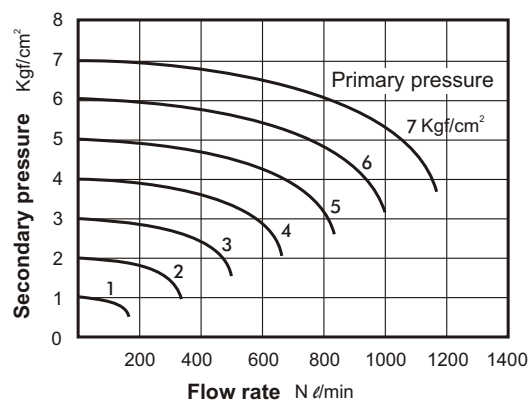


MVSB-188-4E2C.PR

MVSB-188-4E2C MVSB-188-4E2P MVSB-188-4E2R



Flow features:



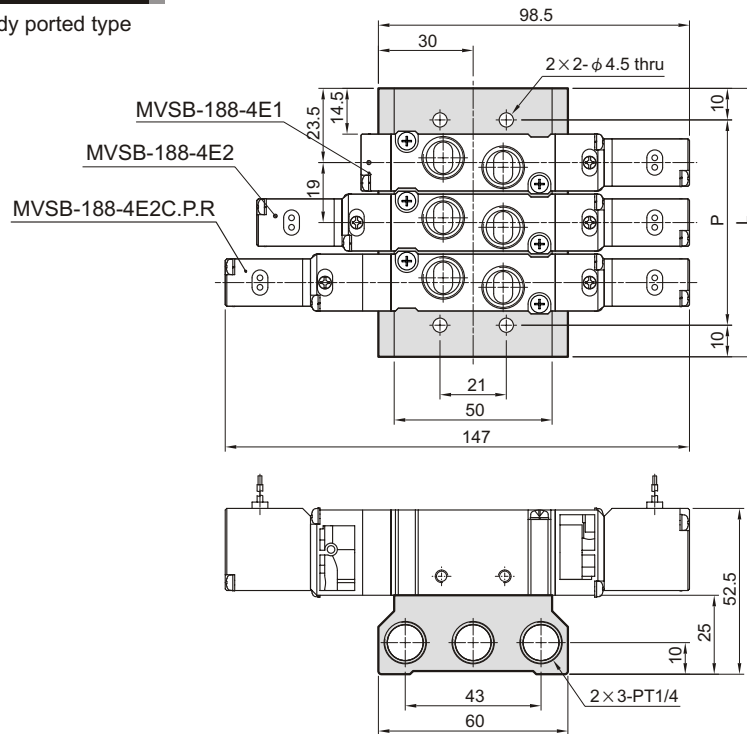
MVSB-188 Manifold

SOLENOID VALVE



MVSB-188-5B*

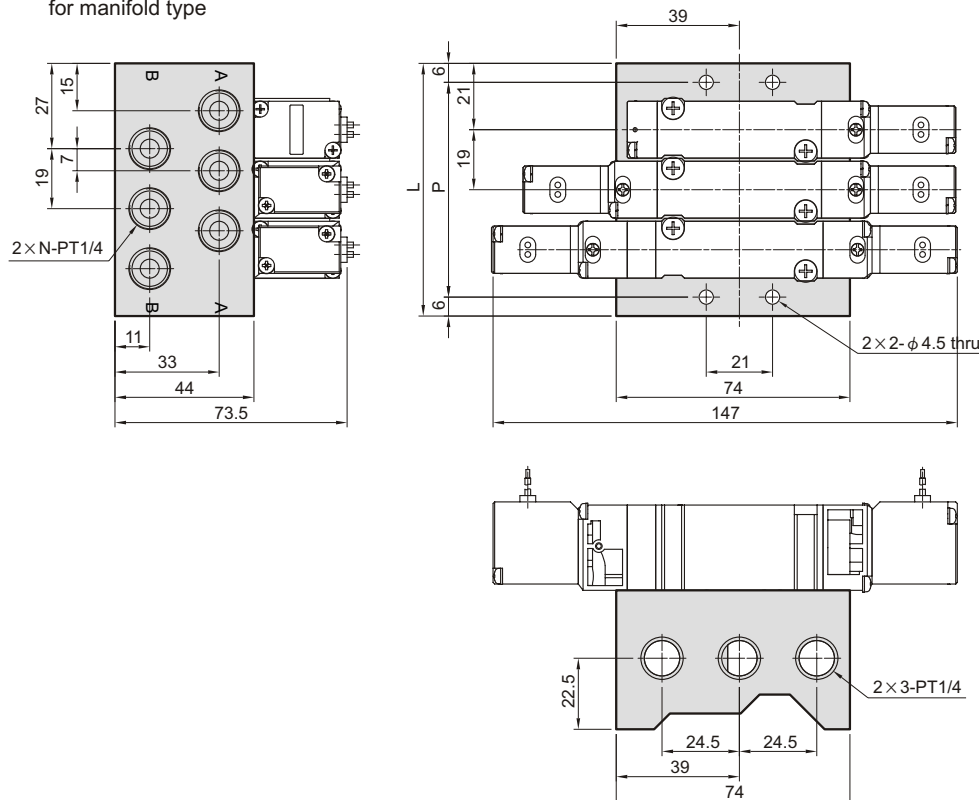
for body ported type



No. of stations	P	L
2	46	66
3	65	85
4	84	104
5	103	123
6	122	142
7	141	161
8	160	180
9	179	199
10	198	218

MVSB-188M-5M*

for manifold type



No. of stations (N)	P	L
2	49	61
3	68	80
4	87	99
5	106	118
6	125	137
7	144	156
8	163	175
9	182	194
10	201	213