

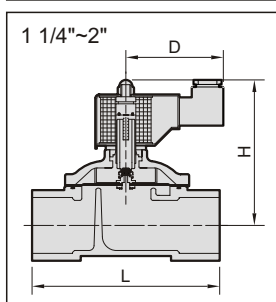
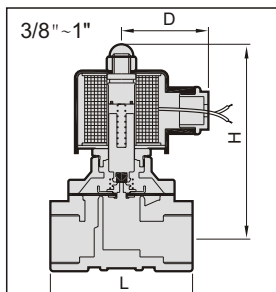
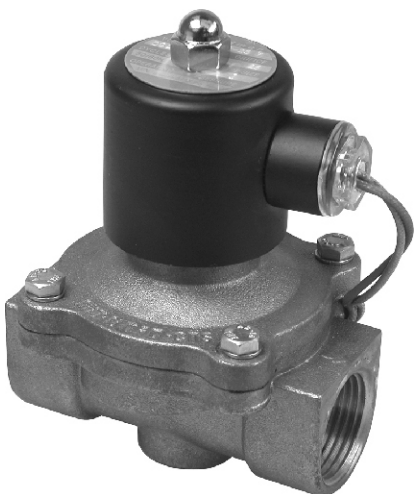
MUG / MUV series Normally closed

SOLENOID VALVE



2-WAY normally closed solenoid valve.

Available fluid: Gas & vacuum.



Specification :

- MUG/V series is pilot diaphragm drive, connected to diaphragm, normal close.
- Can be operated directly without pressure.
- Other voltage of AC/DC available when required.
- AC Voltage tolerance: $\pm 10\%$.
- DC Voltage tolerance: $\pm 1\%$.

Material:

Parts name	Material
Body	Forge brass / Cast bronze
Coil	Special copper wire (H)
Tube	Stainless steel
Spring	Stainless steel
Core	Stainless steel
Plug	NBR
Diaphragm	NBR for gas use

Not for fluid of:

- Liquid when heat, solid when cool.
- Corrosive fluid.
- Viscosity over 20 cst.
- Temperature over 80°C.

Caution:

- Pipes must be washed neat and clean before fitted.
- A Y-STRAINER has to be installed in the front of solenoid valve, that is best for long life.

Order example:

MUG – 20 – □ – AC110 – BSP

MODEL

MUG : Gas
MUV : Vacuum

VOLTAGE

AC220V(50/60)Hz
AC110V(50/60)Hz
DC24V

PORT THREAD

Blank: PT thread
BSP: BSP thread
NPT: NPT thread

PIPE SIZE

10 : 3/8"
15 : 1/2"
20 : 3/4"
25 : 1"
35 : 1 1/4"
40 : 1 1/2"
50 : 2"

COIL

□ : Special copper wire
D : DIN

Model	DIN	Pipe size	Cv	Orifice (mm)	Fluid temp	Max. operating pressure diff. kgf/cm ²		Dimensions(mm)			Weight (kg)
						Gas	Vacuum	L	H	D	
MUG/V-10	●	PT 3/8"	2.4	15	-5~+80°C	0~7	0~10 ⁻³ Torr	70	100	50	0.9
MUG/V-15	●	PT 1/2"	4.5	15	-5~+80°C	0~7	0~10 ⁻³ Torr	70	100	50	0.9
MUG/V-20	●	PT 3/4"	8.6	20	-5~+80°C	0~7	0~10 ⁻³ Torr	73	102	50	1.0
MUG/V-25	●	PT 1"	12	25	-5~+80°C	0~7	0~10 ⁻³ Torr	93	106	50	1.8
MUG/V-35	●	PT 1 1/4"	24	35	-5~+80°C	0~7	0~10 ⁻³ Torr	125	140	58	3.2
MUG/V-40	●	PT 1 1/2"	28	40	-5~+80°C	0~7	0~10 ⁻³ Torr	125	140	58	3.5
MUG/V-50	●	PT 2"	48	50	-5~+80°C	0~7	0~10 ⁻³ Torr	167	170	58	5.4

※ The pressure ratings indicated above are based on AC110V/220V. The maximum pressure may vary in case on DC/AC24V.