

MCJI series

COMPACT CYLINDERS

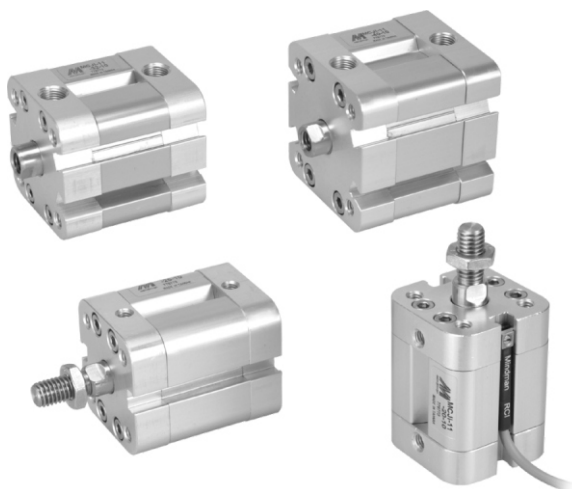


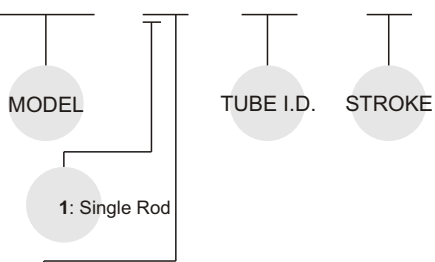
Table for standard stroke

Tube I.D.	Stroke (mm)
φ 20,25	5, 10, 15, 20, 25, 30, 40, 50, 60, 80, 100, 200
φ 32,40	5, 10, 15, 20, 25, 30, 40, 50, 60, 80, 100, 200, 300
φ 50,63	10, 15, 20, 25, 30, 40, 50, 60, 80, 100, 200, 300, 400
φ 80	15, 20, 25, 30, 40, 50, 60, 80, 100, 200, 300, 400, 500

※ Please consult us if stroke out of specification.

Order example:

MCJI — 12 — 20 — 25



STYLE:

Code	Symbol	Description
1 1		Double acting / Male thread
1 2		Double acting / Female thread

※ Order example for special specification, refer to page H-03.

Features:

- ISO-21287 standard.
- Wide range of bore sizes and strokes.
- Ultra compact, light weight and space saving.
- Sensor slots on RCI sides for flush mounting of proximity sensors.
- Magnetic as standard.

Specification:

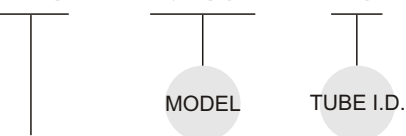
Model	MCJI	
Acting type	Double acting	
Tube I.D.(mm)	20, 25	32, 40, 50, 63, 80
Port size	M5 × 0.8	G 1/8
Medium	Air	
Operating pressure range	0.5~9.9 kgf/cm ²	
Proof pressure	15 kgf/cm ²	
Available speed range	50~500 mm/sec	
Lubricator	Without lubrication	
Cushion	Rubber bumper	
Stroke length tolerance (※ 1)	+ 0 ~ + 1.0 mm	
Ambient temperature	- 5°C ~ + 60°C (No freezing)	
Sensor switch (※ 2)	RCI	

※ 1. Stroke length tolerance does not include the amount of bumper change.

※ 2. RCI specifications please refer to the R-10 page.

Mounting accessories:

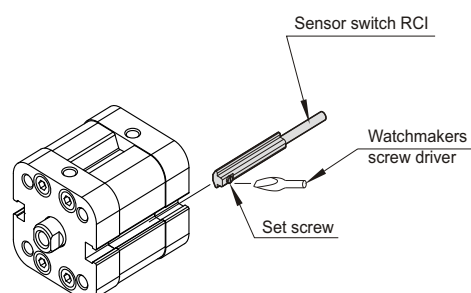
FAC — MCJI — 20



MOUNTING TYPE

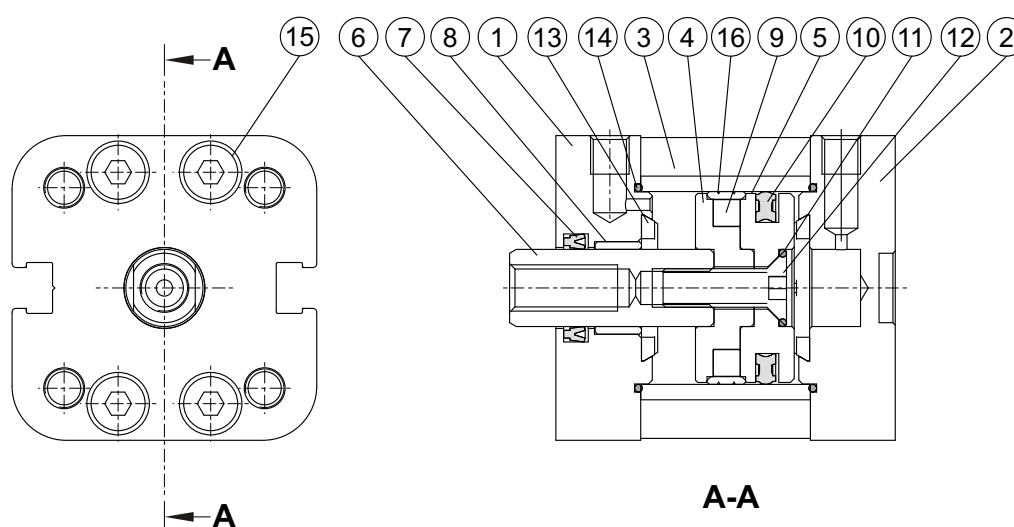
	LB
	FAC
	FBC

Installation of sensor switch:



MCJI Inside structure & Parts list

COMPACT CYLINDERS



Material :

No.	Part name	Material	Q'y	Component parts (inclusion)	Repair kits (inclusion)
1	Rod cover	Aluminum alloy	1	●	
2	End cover	Aluminum alloy	1	●	
3	Tube	Aluminum alloy	1		
4	Piston-R	Aluminum alloy	1	●	
5	Piston-H	Aluminum alloy	1	●	
6	Piston rod	Medium carbon steel	1		
7	Rod packing	NBR	1	●	●
8	Bush	Bearing alloy	1	●	
9	Magnet ring	Magnet material	1	●	
10	Piston packing	NBR	1	●	●
11	O-ring	NBR	1	●	
12	Screw	Carbon steel	1	●	
13	Cushion	NBR	2	●	
14	O-ring	NBR	2	●	●
15	Screw	Stainless steel	8	●	
16	Wear ring	Teflon	1	●	

Order example of component parts / repair kits:

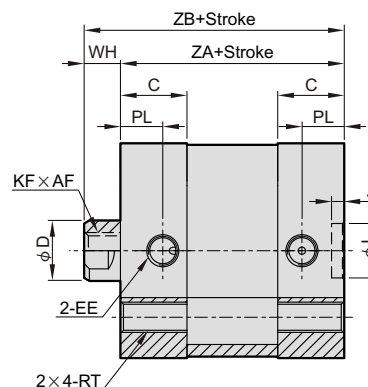
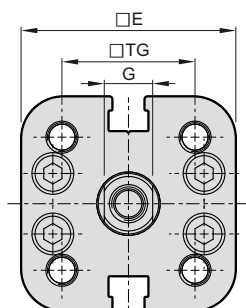
Tube I.D.	Component parts	Repair kits
φ 20	CP-MCJI-20	PS-MCJI-20
φ 25	CP-MCJI-25	PS-MCJI-25
φ 32	CP-MCJI-32	PS-MCJI-32
φ 40	CP-MCJI-40	PS-MCJI-40
φ 50	CP-MCJI-50	PS-MCJI-50
φ 63	CP-MCJI-63	PS-MCJI-63
φ 80	CP-MCJI-80	PS-MCJI-80

MCJI Dimensions $\phi 20 \sim \phi 80$

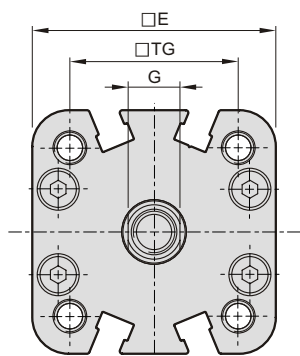
COMPACT CYLINDERS



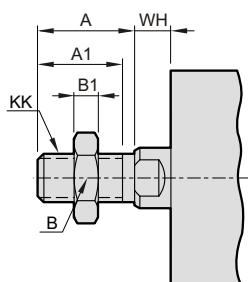
$\phi 20, \phi 25$



$\phi 32 \sim \phi 80$



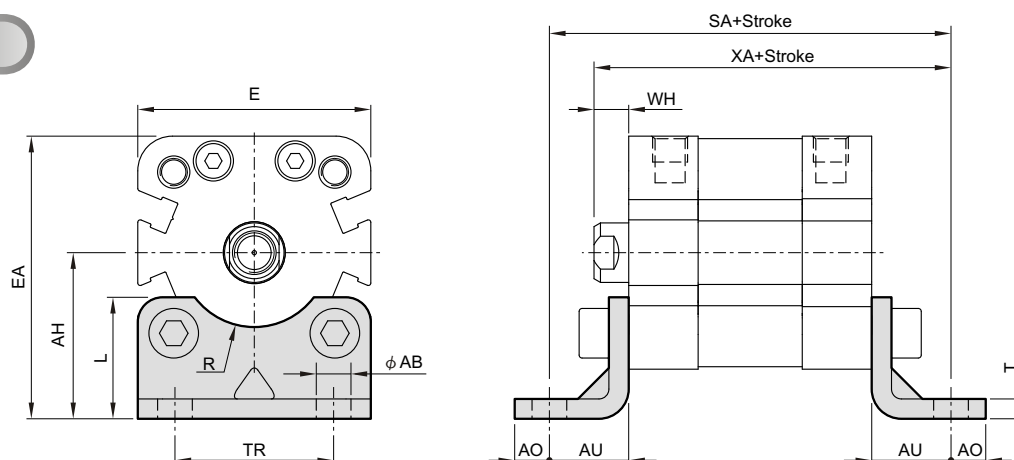
MCJI-11
(Double acting / Male thread)



Code Tube I.D.	A	A1	B	B1	KK
20	16	14	13	4	M8×1.25
25	16	14	13	4	M8×1.25
32	19	17	17	5	M10×1.25
40	19	17	17	5	M10×1.25
50	22	20	19	6	M12×1.25
63	22	20	19	6	M12×1.25
80	28	26	24	8	M16×1.5

Code Tube I.D.	AF	C	D	E	EE	G	WH	I	J	KF	PL	TG	RT	ZA	ZB
20	14	11	10	35.5	M5×0.8	8	6	9	2.1	M6×1.0	7	22	M5×0.8	37	43
25	14	11	10	39.5	M5×0.8	8	6	9	2.1	M6×1.0	7	26	M5×0.8	39	45
32	15	14	12	47	G 1/8	10	7	9	2.1	M8×1.25	7.5	32.5	M6×1.0	44	51
40	15	14	12	54.5	G 1/8	10	7	9	2.1	M8×1.25	7.5	38	M6×1.0	45	52
50	18	14	16	65.5	G 1/8	14	8	12	2.6	M10×1.5	7.5	46.5	M8×1.25	45	53
63	18	14.5	16	75.5	G 1/8	14	8	12	2.6	M10×1.5	7.5	56.5	M8×1.25	49	57
80	20	15.5	20	95.5	G 1/8	17	10	12	2.6	M12×1.75	8	72	M10×1.5	54	64

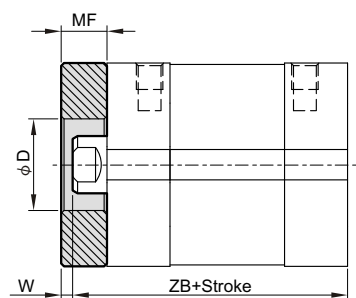
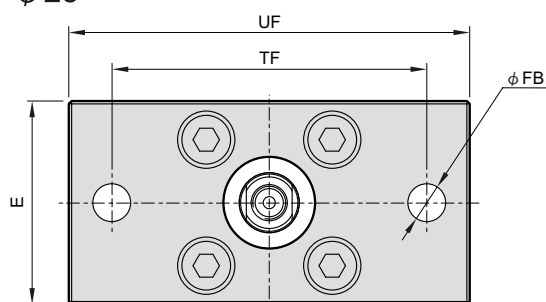
LB



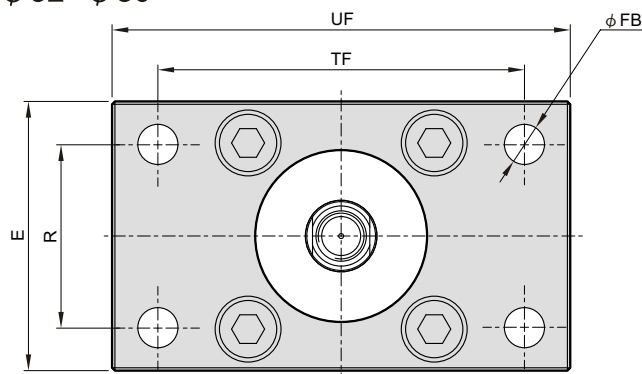
Code Tube I.D.	AB	AH	AO	AU	E	EA	L	R	SA	T	TR	WH	XA
20	7	27	7	16	35.5	44.8	21	—	69	4	22	6	59
25	7	29	7	16	39.5	48.8	22	—	71	4	26	6	61
32	7	33.5	7	16	47	57	24.5	15	76	4	32	7	67
40	10	38	9	18	54.5	65.3	26	17.5	81	4	36	7	70
50	10	45	9	21	65.5	77.8	31	20	87	5	45	8	74
63	10	50	9	21	75.5	87.8	31	22.5	91	5	50	8	78
80	12	63	11	26	95.5	110.8	40	—	106	6	63	10	90

FAC

φ 20~φ 25



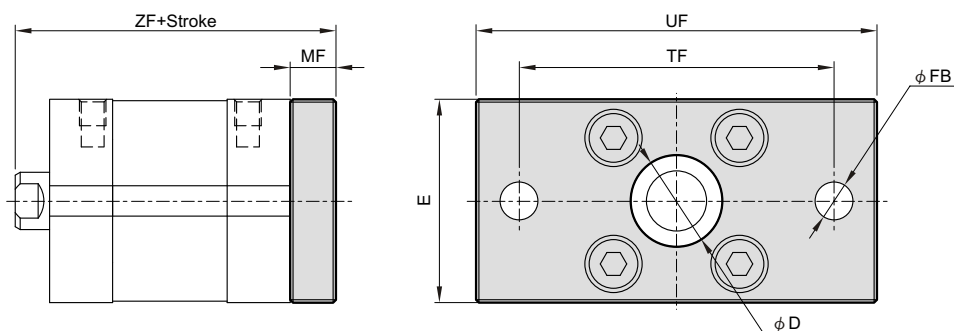
φ 32~φ 80



Code Tube I.D.	D	E	FB	MF	R	TF	UF	W	ZB
20	16	35.5	6.6	8	—	55	70	2	43
25	16	39.5	6.6	8	—	60	76	2	45
32	30	47	7	10	32	64	80	3	51
40	35	54.5	9	10	36	72	90	3	52
50	40	65.5	9	12	45	90	110	4	53
63	45	75.5	9	12	50	100	120	4	57
80	45	95.5	12	16	63	126	150	6	64

FBC

$\phi 20 \sim \phi 25$



$\phi 32 \sim \phi 80$

Code Tube I.D.	D	E	FB	MF	R	TF	UF	ZF
20	16	35.5	6.6	8	—	55	70	51
25	16	39.5	6.6	8	—	60	76	53
32	30	47	7	10	32	64	80	61
40	35	54.5	9	10	36	72	90	62
50	40	65.5	9	12	45	90	110	65
63	45	75.5	9	12	50	100	120	69
80	45	95.5	12	16	63	126	150	80

