

MCCN series

ROUND CYLINDERS



Features:

- Many mounting options available.
- Interchangeable with other manufacturers.

Specification:

Model	MCCN					
Acting type	Double acting					
Tube I.D.	20	25	32	40	50	63
Port size	NPT 1/8				NPT 1/4	
Medium	Air					
Max operating pressure	9.9 kgf/cm ²					
Min operating pressure	0.5 kgf/cm ²					
Proof pressure	15 kgf/cm ²					
Ambient temperature	- 5~ + 60℃ (No freezing)					
Lubrication	Not required					
Available speed range	50~500 mm/sec					
Cushion	With rubber cushion pad					
Sensor switch	RCA					
Sensor switch holder	BGA20	BGA25	BGA32	BGA40	BGA50	BGA63

Table for standard stroke

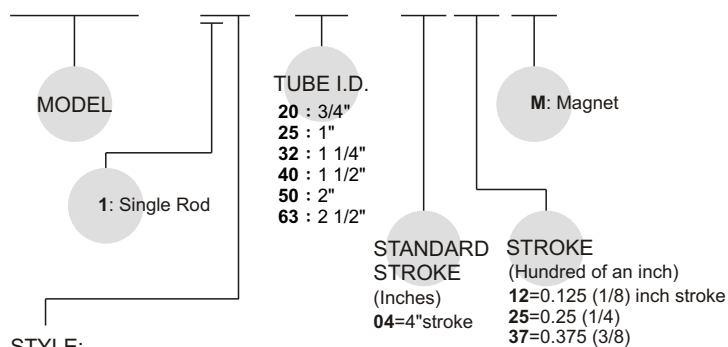
Tube I.D.(inch)	Stroke (inch)
3/4"	1, 2, 3, 4, 5, 6, 8
1"~2 1/2"	1, 2, 3, 4, 5, 6, 8, 10, 12

Long stroke:

Please reconfirm the dimension with our sales department when the stroke over our standard.

Order example:

MCCN - 11 - 40 - 0425 M



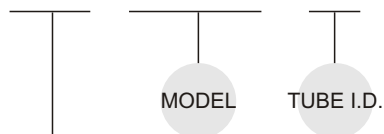
STYLE:

Code	Symbol	Description
1 1		Double acting / Male thread

※ Order example for special specification, refer to page H-03.

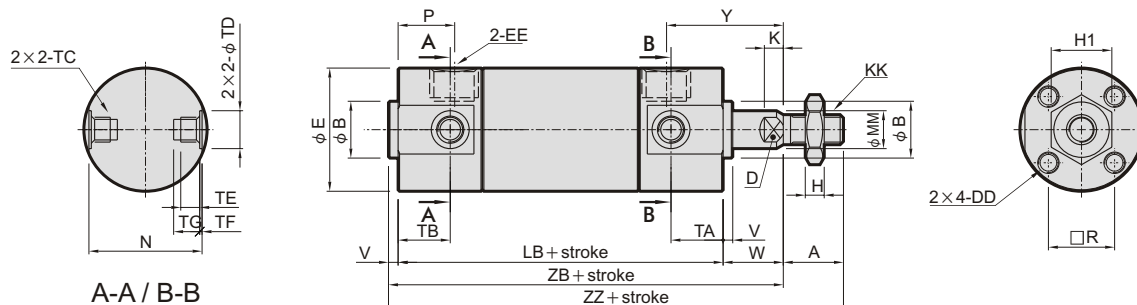
Mounting accessories:

FAC - MCCN - 40



MOUNTING TYPE

	LB
	CB
	FAC
	FBC
	SDB-R
	SDB-H
	CB+SDB
	TA
	TB



A-A / B-B

Unit: inch

Code Tube I.D.	Standard stroke range	Long stroke range	A	B	D	DD	E	EE	H	H1	K	KK	LB
20	~ 7.87	7.91~13.78	0.50	0.472 ⁺⁰ _{-0.0011}	0.24	#8-32×0.28 depth	1.02	NPT 1/8	0.16	0.44	0.157	1/4-28 UNF	2.70 (3.01)
25	~11.81	11.85~15.75	0.50	0.551 ⁺⁰ _{-0.0011}	0.31	#10-32×0.30 depth	1.22	NPT 1/8	0.19	0.50	0.197	5/16-24 UNF	2.70 (3.01)
32	~11.81	11.85~17.72	0.75	0.709 ⁺⁰ _{-0.0011}	0.39	#10-32×0.30 depth	1.50	NPT 1/8	0.26	0.69	0.217	7/16-20 UNF	2.78 (3.09)
40	~11.81	11.85~31.50	0.75	0.984 ⁺⁰ _{-0.0013}	0.55	1/4-28×0.47 depth	1.85	NPT 1/8	0.26	0.69	0.236	7/16-20 UNF	3.06 (3.41)
50	~11.81	11.85~47.24	0.88	1.181 ⁺⁰ _{-0.0013}	0.71	5/16-24×0.63 depth	2.28	NPT 1/4	0.32	0.75	0.276	1/2-20 UNF	3.53 (4.00)
63	~11.81	11.85~47.24	0.88	1.260 ⁺⁰ _{-0.0015}	0.71	3/8-24×0.63 depth	2.83	NPT 1/4	0.32	0.75	0.276	1/2-20 UNF	3.53 (4.00)

Code Tube I.D.	MM	N	P	R	TA	TB	TC	TD _{H9}	TE	TF	TG	V	W	Y	ZB	ZZ
20	0.315	0.94	0.47	0.55	0.433	0.433	M5×0.8	0.315	0.157	0.020	0.217	0.08	0.50	0.97	3.28 (3.59)	3.78 (4.09)
25	0.394	1.14	0.47	0.65	0.433	0.433	M6×0.75	0.394	0.197	0.039	0.256	0.08	0.62	1.09	3.40 (3.71)	3.90 (4.21)
32	0.472	1.42	0.43	0.79	0.433	0.394	M8×1.0	0.472	0.217	0.049	0.295	0.08	0.88	1.35	3.74 (4.05)	4.49 (4.80)
40	0.630	1.73	0.47	1.02	0.472	0.394	M10×1.25	0.551	0.240	0.049	0.335	0.08	0.88	1.39	4.02 (4.37)	4.77 (5.12)
50	0.787	2.17	0.51	1.26	0.512	0.472	M12×1.25	0.630	0.295	0.079	0.394	0.08	1.19	1.74	4.80 (5.27)	5.68 (6.15)
63	0.787	2.72	0.51	1.50	0.512	0.472	M14×1.5	0.709	0.453	0.118	0.571	0.08	1.19	1.74	4.80 (5.27)	5.68 (6.15)

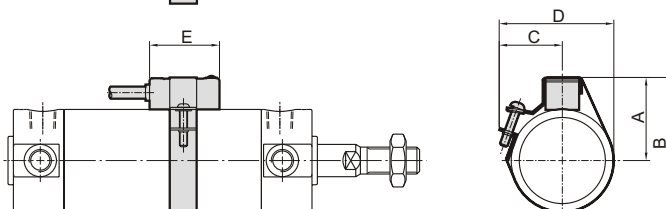
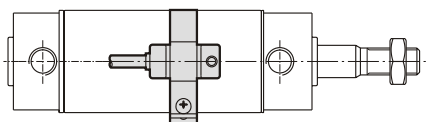
() : Dimension for long stroke.

Installation of sensor switch

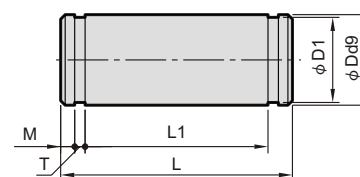
Sensor switch: RCA
Sensor switch band:
BGA**

Unit: inch

Code Tube I.D.	A	B	C	D	E
20	0.709	1.220	0.984	1.50	1.024
25	0.787	1.378	1.063	1.654	1.024
32	0.945	1.693	1.220	1.969	1.024
40	1.142	2.087	1.417	2.362	1.024
50	1.339	2.480	1.614	2.756	1.024
63	1.614	3.031	1.890	3.307	1.024



Pin



Order example: ※MCCG / MCCN are common accessories.

PIN – MCCG – 32 – CB – P

PIN TUBE I.D. TYPE P : with split pin
CB : for CB accessory

for CB

Unit: inch

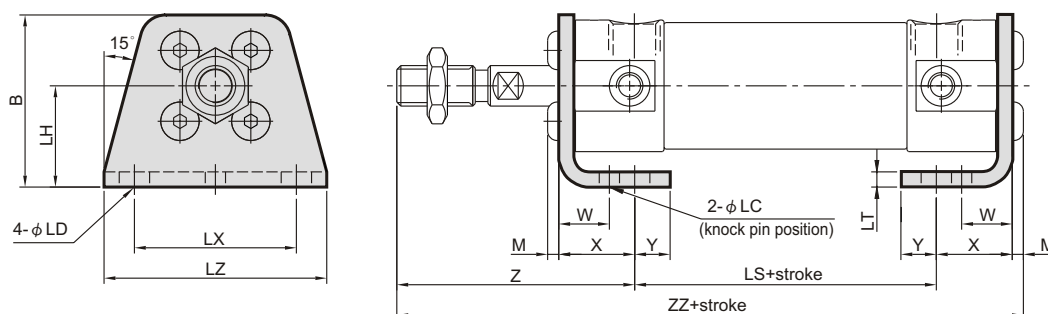
Code Tube I.D.	Dd9	D1	L	L1	M	T	Snap ring
20	0.315 ^{-0.0016} _{-0.0030}	0.30	1.71	1.52	0.06	0.04	STW-8
25	0.394 ^{-0.0016} _{-0.0030}	0.38	1.89	1.68	0.06	0.05	STW-10
32	0.472 ^{-0.0020} _{-0.0037}	0.45	2.34	2.13	0.06	0.05	STW-12
40	0.551 ^{-0.0020} _{-0.0037}	0.53	2.81	2.56	0.08	0.05	STW-14
50	0.630 ^{-0.0020} _{-0.0037}	0.60	3.39	3.13	0.08	0.05	STW-16
63	0.709 ^{-0.0020} _{-0.0037}	0.67	4.15	3.85	0.10	0.05	STW-18

MCCN Mounting accessories $\phi 3/4"$ ~ $\phi 2 1/2"$

ROUND CYLINDERS



LB



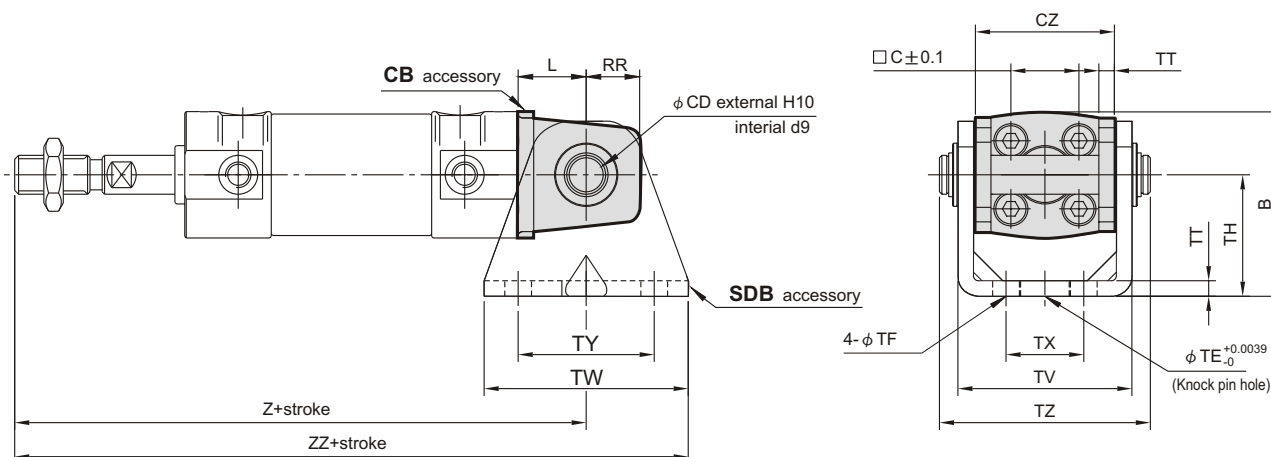
Unit: inch

Code Tube I.D.	B	LC	LD	LH	LS	LT	LX	LZ	M	W	X	Y	Z	ZZ
20	1.34	0.16	0.24	0.79	1.77 (2.08)	0.12	1.26	1.73	0.09	0.39	0.59	0.28	1.47	3.92 (4.23)
25	1.52	0.16	0.24	0.87	1.77 (2.08)	0.12	1.42	1.93	0.11	0.39	0.59	0.28	1.59	4.06 (4.37)
32	1.77	0.16	0.26	0.98	1.77 (2.08)	0.12	1.73	2.28	0.11	0.39	0.63	0.31	2.14	4.65 (4.96)
40	2.15	0.16	0.26	1.18	2.01 (2.36)	0.12	2.13	2.80	0.13	0.39	0.65	0.33	2.16	4.95 (5.30)
50	2.78	0.20	0.35	1.57	2.17 (2.64)	0.18	2.60	3.39	0.17	0.69	0.87	0.43	2.76	5.96 (6.43)
63	3.25	0.20	0.43	1.77	2.17 (2.64)	0.18	3.23	4.17	0.22	0.69	0.87	0.51	2.76	6.01 (6.48)

(): Dimension for long stroke.

CB

SDB+Pin (Extra purchase)



Unit: inch

Code Tube I.D.	B	CD	CZ	L	RR	TE	TF	TH	TT	TV	TW	TX	TY	TZ	Z	ZZ
20	1.50	0.315	1.14	0.55	0.43	0.394	0.22	0.98	0.13	1.41	1.65	0.63	1.10	1.71	4.27 (4.58)	5.09 (5.40)
25	1.79	0.394	1.30	0.63	0.51	0.394	0.22	1.18	0.13	1.57	1.65	0.79	1.10	1.89	4.47 (4.78)	5.29 (5.60)
32	2.13	0.472	1.57	0.79	0.59	0.394	0.26	1.38	0.18	1.94	1.89	0.87	1.10	2.34	5.21 (5.52)	6.16 (6.47)
40	2.50	0.551	1.93	0.87	0.71	0.394	0.26	1.57	0.18	2.30	2.20	1.18	1.18	2.81	5.57 (5.92)	6.67 (7.02)
50	3.11	0.630	2.36	0.98	0.79	0.787	0.35	1.97	0.24	2.85	2.52	1.42	1.42	3.39	6.60 (7.07)	7.86 (8.33)
63	3.78	0.709	2.91	1.18	0.87	0.787	0.43	2.36	0.31	3.56	2.91	1.81	1.81	4.15	6.80 (7.27)	8.25 (8.72)

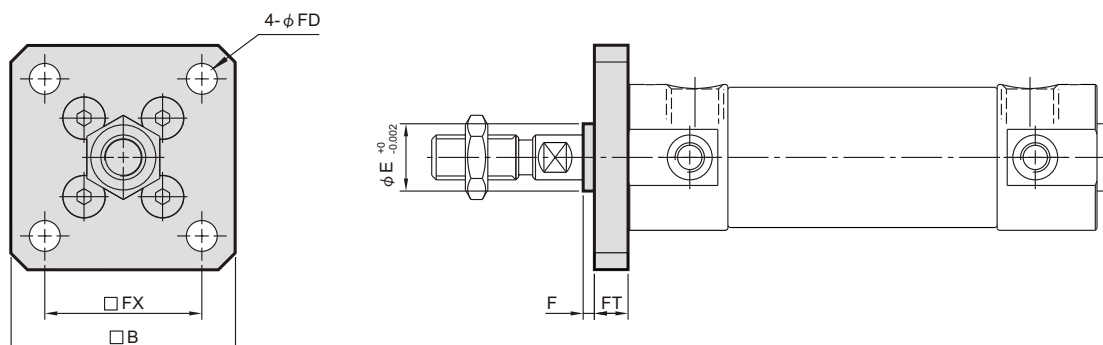
(): Dimension for long stroke.

MCCN Mounting accessories $\phi 3/4"$ ~ $\phi 2 1/2"$

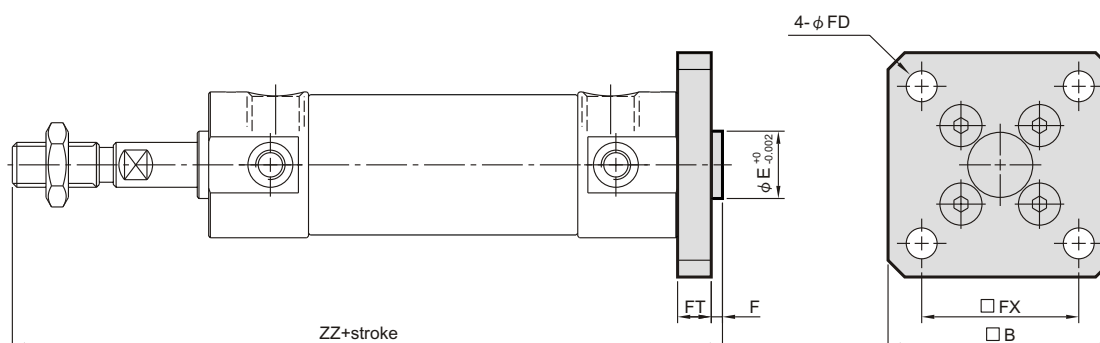
ROUND CYLINDERS



FAC



FBC



Unit: inch

Code Tube I.D.	B	E	F	FX	FD	FT	ZZ
20	1.57	0.472	0.08	1.10	0.22	0.24	4.03 (4.34)
25	1.73	0.551	0.08	1.26	0.22	0.28	4.19 (4.50)
32	2.09	0.709	0.08	1.50	0.26	0.28	4.78 (5.09)
40	2.40	0.984	0.08	1.18	0.26	0.31	5.09 (5.44)
50	2.99	1.181	0.08	2.28	0.35	0.35	6.05 (6.52)
63	3.62	1.260	0.08	2.76	0.43	0.35	6.05 (6.52)

(): Dimension for long stroke.

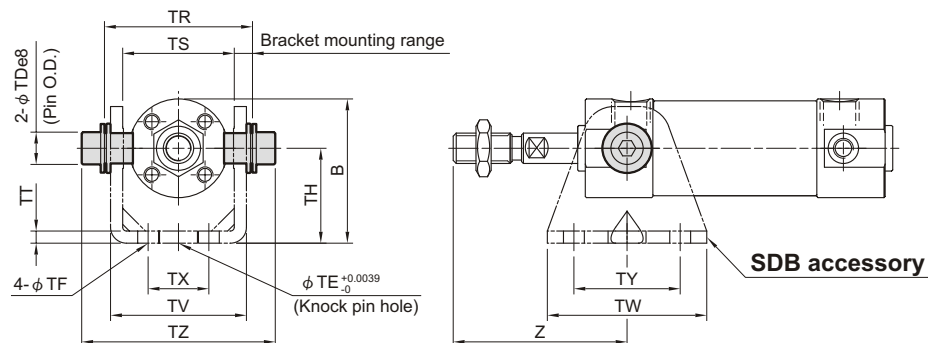
MCCN Mounting accessories $\phi 3/4"$ ~ $\phi 2 1/2"$

ROUND CYLINDERS



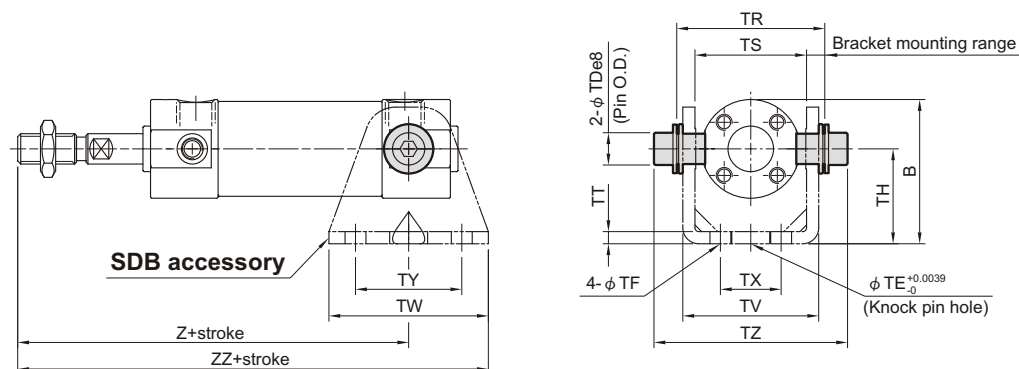
TA

Front trunnion



TB

Rear trunnion

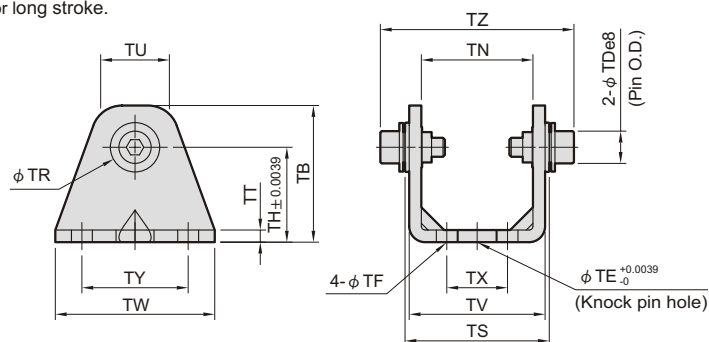


Unit: inch

Code Tube I.D.	B	TDe8	TE	TF	TH	TR	TS	TT	TV	TW	TX	TY	TZ	Front	Rear	
														Z	Z	ZZ
20	1.50	0.315	0.394	0.22	0.98	1.54	1.14	0.13	1.41	1.65	0.63	1.10	2.00	1.43	3.28 (3.59)	4.11 (4.42)
25	1.79	0.394	0.394	0.22	1.18	1.69	1.30	0.13	1.57	1.65	0.79	1.10	2.27	1.55	3.40 (3.71)	4.23 (4.54)
32	2.13	0.472	0.394	0.26	1.38	2.11	1.57	0.18	1.94	1.89	0.87	1.10	2.88	2.06	4.03 (4.34)	4.98 (5.29)
40	2.50	0.551	0.394	0.26	1.57	2.54	1.93	0.18	2.30	2.20	1.18	1.18	3.52	2.10	4.31 (4.66)	5.41 (5.76)
50	3.11	0.630	0.787	0.35	1.97	3.15	2.36	0.24	2.85	2.52	1.42	1.42	4.29	2.58	5.14 (5.61)	6.40 (6.87)
63	3.78	0.709	0.787	0.43	2.36	3.86	2.91	0.31	3.56	2.91	1.81	1.81	5.15	2.58	5.14 (5.61)	6.60 (7.07)

() : Dimension for long stroke.

SDB

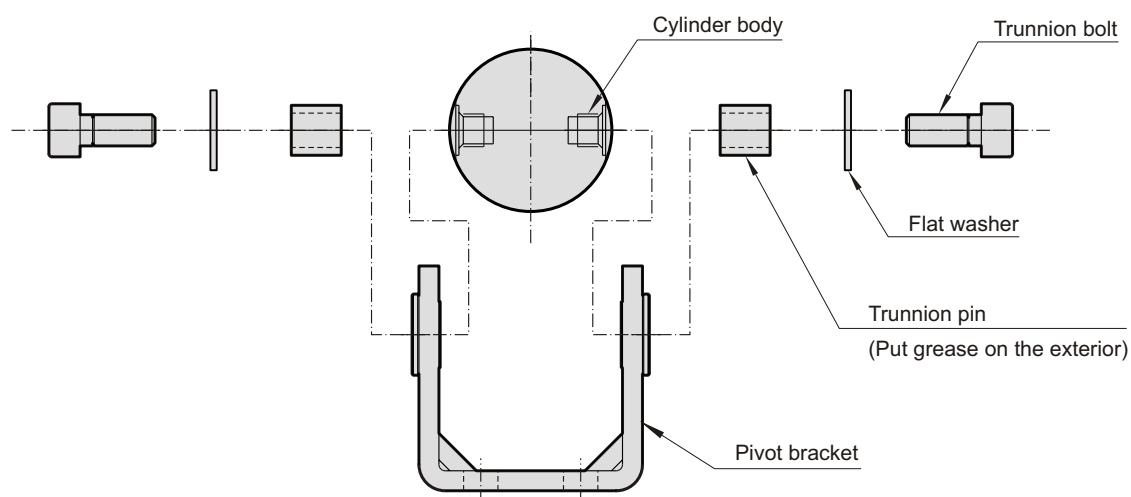


Unit: inch

Code Tube I.D.	TB	TE	TF	TH	TN	TR	TT	TU	TV	TW	TX	TY	TS	TZ	Applicable pin O.D.
20	1.42	0.394	0.22	0.98	1.15	0.51	0.13	0.71	1.41	1.65	0.63	1.10	1.50	2.00	0.315 -0.0016 -0.0030
25	1.69	0.394	0.22	1.18	1.30	0.59	0.13	0.81	1.57	1.65	0.79	1.10	1.65	2.27	0.394 -0.0016 -0.0030
32	1.97	0.394	0.26	1.38	1.59	0.67	0.18	0.93	1.94	1.89	0.87	1.10	2.06	2.88	0.472 -0.0020 -0.0037
40	2.28	0.394	0.26	1.57	1.94	0.83	0.18	1.07	2.30	2.20	1.18	1.18	2.50	3.52	0.551 -0.0020 -0.0037
50	2.76	0.787	0.35	1.97	2.38	0.94	0.24	1.17	2.85	2.52	1.42	1.42	3.10	4.29	0.630 -0.0020 -0.0037
63	3.23	0.787	0.43	2.36	2.94	1.02	0.31	1.35	3.56	2.91	1.81	1.81	3.80	5.15	0.709 -0.0020 -0.0037

Trunnion

Follow the procedures below when mounting a pivot bracket on the trunnion.



Clevis

Follow the procedures below when mounting a pivot bracket on the clevis.

