

## How to Order

K E 18 10 - L - A14

①                      ②                      ③                      ④

### ① Buffer style

E	External spring
I	Built-in spring

### ② Buffer stroke

10
20
30
50

### ③ Vacuum entry connection

Nil	Standard
L	Lateral exhaust
V	Female thread

### ④ Mounting connection-Male thread

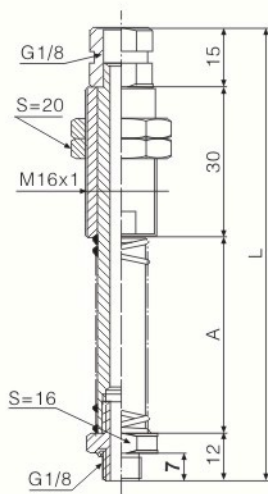
Symbol	Male thread	Indent HEX
A14	M14x1	19
A16	M16x1	20
A18	M18x1	22



## Features

- ☆ With buffer spring, it can adjust height differences automatically when transfer the objects with height differences.
- ☆ Various connection thread and different stroke, it is suitable for standard vacuum pad. Wide applications.
- ☆ Touch with the fragile workpiece flexibly, buffer the impact to the object.

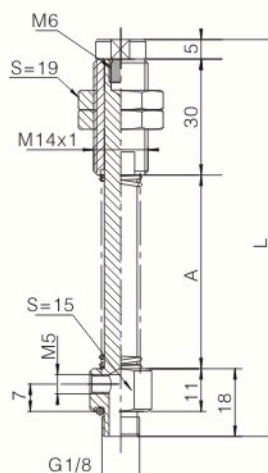
## Dimensions (mm)



**KE18 50 -A16**

(mm)

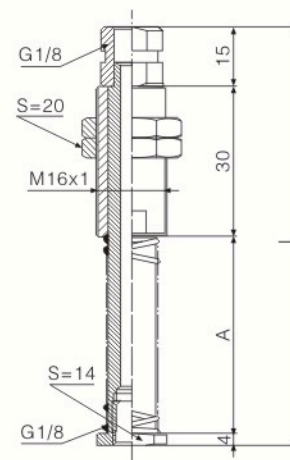
Buffer stroke	A	L
10	20	77
20	35	92
30	50	107
50	70	127



**KE18 30 -L-A14**

(mm)

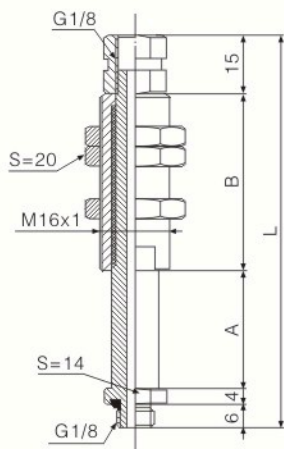
Buffer stroke	A	L
10	20	73
20	35	88
30	50	103
50	70	123



**KE18 20 -V-A16**

(mm)

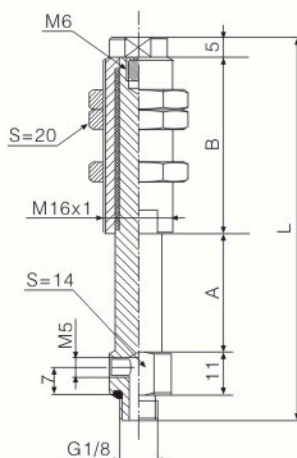
Buffer stroke	A	L
10	20	69
20	35	84
30	50	99
50	70	119



**KI18 20 -A16**

(mm)

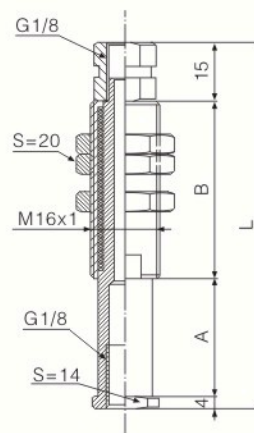
Buffer stroke	A	B	L
10	10	25	60
20	20	35	80
30	30	45	100
50	50	65	140



**KI18 20 -L-A16**

(mm)

Buffer stroke	A	B	L
10	10	25	58
20	20	35	78
30	30	45	98
50	50	65	138



**KI18 20 -V-A16**

(mm)

Buffer stroke	A	B	L
10	10	25	54
20	20	35	74
30	30	45	94
50	50	65	134