

How to Order

K **I** 14 **10** - **V** - **A18**
① ② ③ ④

① Buffer style

E	External spring
I	Built-in spring

② Buffer stroke

10、20、30、50

③ Vacuum entry connection

Nil	Standard
V	Female thread

④ Mounting connection-Male thread

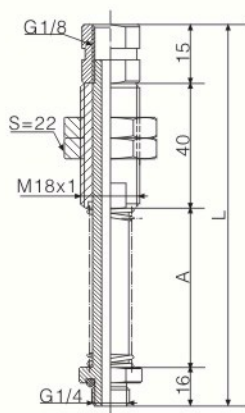
Symbol	Male thread	Indent HEX
A18	M18x1	22
A20	M20x1.5	24



Features

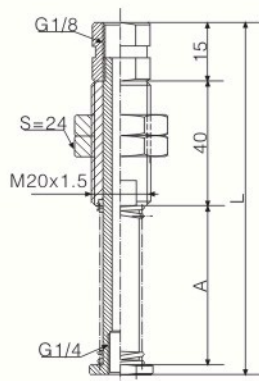
- ☆ With buffer spring, it can adjust height differences automatically when transfer the objects with height differences.
- ☆ Various connection thread and different stroke, it is suitable for standard vacuum pad. Wide applications.
- ☆ Touch with the fragile workpiece flexibly, buffer the impact to the object.

Dimensions (mm)



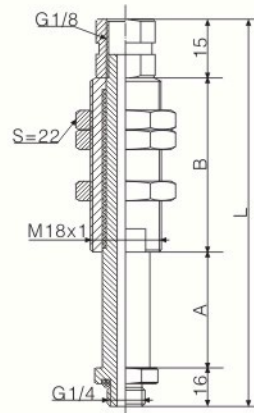
KE14 20 -A18
(mm)

Buffer stroke	A	L
10	20	91
20	35	106
30	50	121
50	70	141



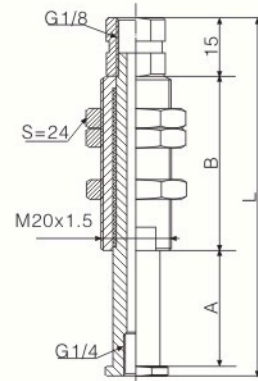
KE14 20 - V -A20
(mm)

Buffer stroke	A	L
10	20	80
20	35	95
30	50	110
50	70	130



KI14 20 -A18
(mm)

Buffer stroke	A	B	L
10	10	25	66
20	20	35	86
30	30	45	106
50	50	65	146



KI14 20 - V -A20
(mm)

Buffer stroke	A	B	L
10	10	25	55
20	20	35	75
30	30	45	95
50	50	65	135