

## Features

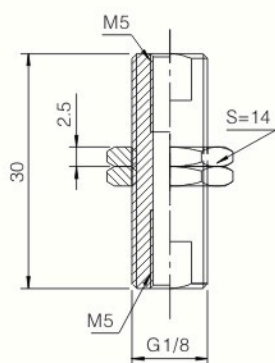
- ☆ All Vacuum pads and fittings can be screwed in.
- ☆ Various locking nuts included, flats for spanner on external thread.
- ☆ Permits precise adjustment of the vacuum pad position.
- ☆ No further mounting elements needed, high stability.



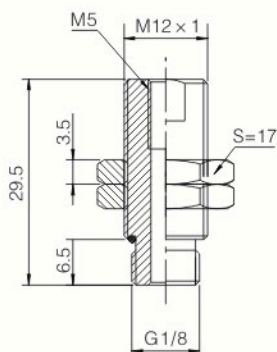
## Dimensions (mm)

### 18 series Ordering Code

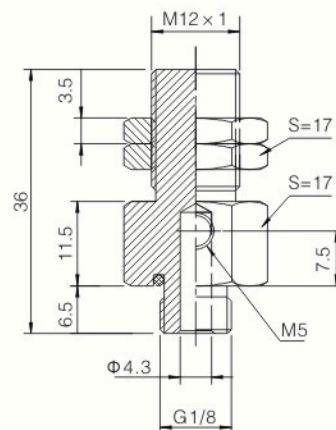
**10.018.1800**



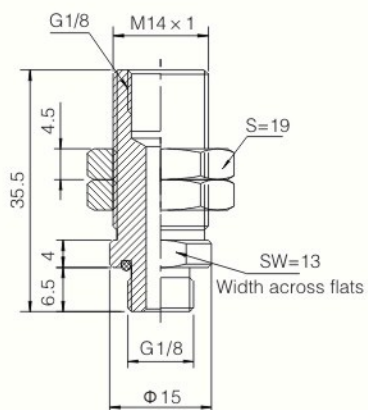
**10.018.1812**



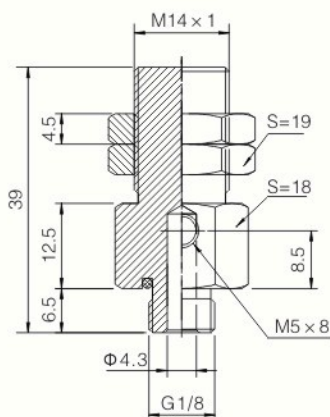
**10.018.1205**



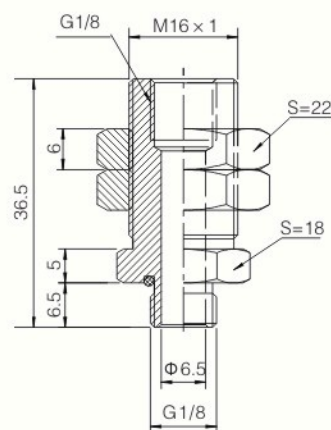
**10.018.1814**



**10.018.1405**



**10.018.1816**



S: Width across flats