

How to Order

APE06 – G- 1 – 2

① ② ③ ④

①Model	APE06	APE08	
②Function	B=NPT1/8 NPT1/4	D=NPSF1/8 NPSF1/4	G=G1/8 G1/4

③Rated voltage

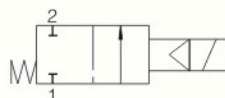
1	DC24V
2	AC110V
3	AC220V

④Lead wine type

1	DIN type without lead wire
2	DIN type with lamp without lead wire

Features

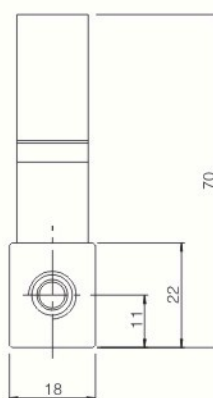
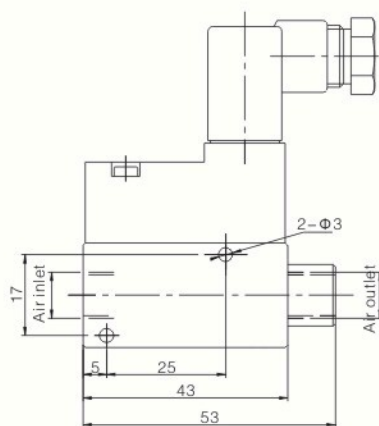
☆ The small solenoid valve (usually close) can remote contro compressed air with large flow, and supply compressed air when the current is switched on.



Specifications

Air supply pressure	2.5~7bar
Ambient temperature	0~60℃
Valve body material	Aluminum
Working Voltage	DC: 24V AC: 110V, 220V -50/60Hz
Current consumption	0.85W, 1.3W

Dimensions (mm)

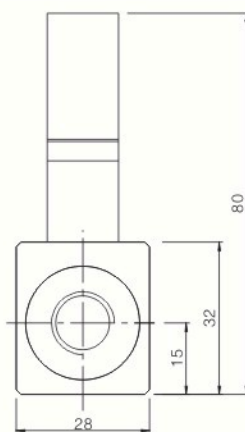
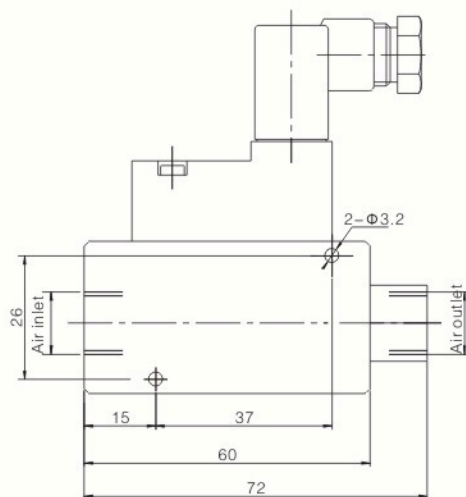


Air inlet(Air outlet)

B=NPT1/8

D=NPSF1/8

G=G1/8



Air inlet(Air outlet)

B=NPT1/4

D=NPSF1/4

G=G1/4