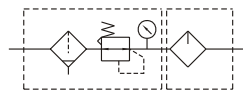


MACP200 series

AIR UNITS (F.R.L.UNIT)



Symbol:



Specification:

Model	MACP200	
Components	MAFR200, MAL200	
Bore No.	6A	8A
Port size	PT 1/8	PT 1/4
Medium	Air	
Operating pressure range	0~9.9kgf/cm ² (0~0.99MPa)	
Proof pressure	15kgf/cm ² (1.5MPa)	
Regulated pressure range	0.5~8.5kgf/cm ² (0.05~0.85MPa)	
Ambient temperature	-5~+60°C (No freezing)	
Filter element	Standard: 40 μm Option: 5 μm	
Lubricating oil capacity	20c.c, 35c.c (MACP200L)	
Min. flow for oil drip	35 ℓ/min	50 ℓ/min
Recommended lubricating oil	Turbine oil ISO-VG32	
Attachment	Pressure gauge(PG-40), bracket	
Weight	432g, 380g (MACP200L)	

Order example:

MACP200L - 6A - □ - B - BSP

MODEL

BORE SIZE

6A: PT 1/8
8A: PT 1/4

FILTER ELEMENT
Blank: 40 μm
5u: 5 μm

Blank: standard type
B: bracket

PORT THREAD

Blank: PT thread
BSP: BSP thread
NPT: NPT thread

Blank: standard type
L: Longer case, no case guard

Flow feature:

