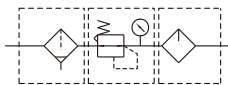


MACT300L series

AIR UNITS (F.R.L.UNIT)



Symbol:



• Longer case for adapting high efficient auto drain valve.

Specification:

Model	MACT300L	
Components	MAF300L, MAR301, MAL300L	
Bore No.	8A	10A
Port size	PT 1/4	PT 3/8
Medium	Air	
Operating pressure range	0~9.9kgf/cm ² (0~0.99MPa)	
Proof pressure	15kgf/cm ² (1.5MPa)	
Effective orifice	32mm ²	34mm ²
Regulated pressure range	0.5~8.5kgf/cm ² (0.05~0.85MPa)	
Ambient temperature	-5~+60°C (No freezing)	
Filter element	Standard: 5 μm Option: 40 μm	
Lubricating oil capacity	65c.c	
Min. Flow for oil drip	50 l/min	60 l/min
Recommended lubricating oil	Turbine oil ISO-VG32	
Attachment	Pressure gauge(PG-40), T-type bracket	
Weight	959 g	

Order example:

MACT300L - 8A - □ - □ - T8 - BSP

MODEL

BORE SIZE

8A: PT 1/4
10A: PT 3/8

D: auto drain valve (FMRF300)

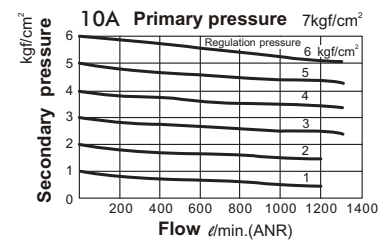
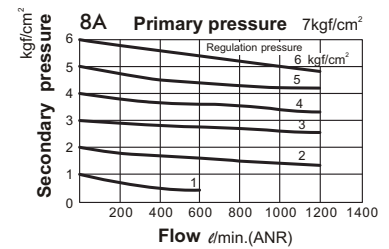
FILTER ELEMENT
Blank: 5 μm
40u: 40 μm

Module mounting bracket
T8: PT 1/4
T10: PT 3/8

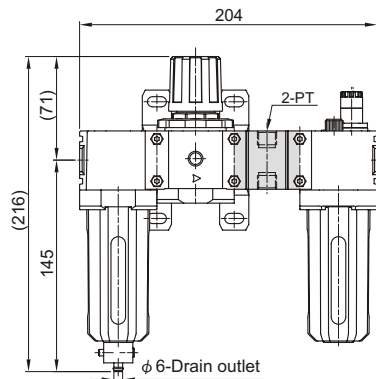
※ Standard Unit contains semi-auto-drain function when operating pressure below 0.5kgf/cm².

PORT THREAD
Blank: PT thread
BSP: BSP thread
NPT: NPT thread

Flow feature:

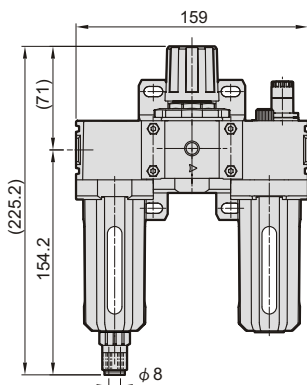


MACT300L-T* Module mounting bracket



MACT300L-D Auto drain valve

Operating pressure range: 1.5~9.9 kgf/cm²



	PT
T8	PT 1/4
T10	PT 3/8

