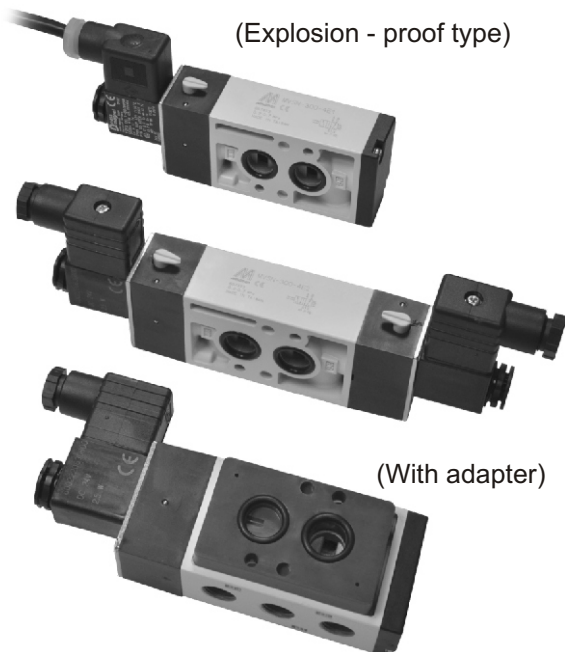


MVSN-300 series

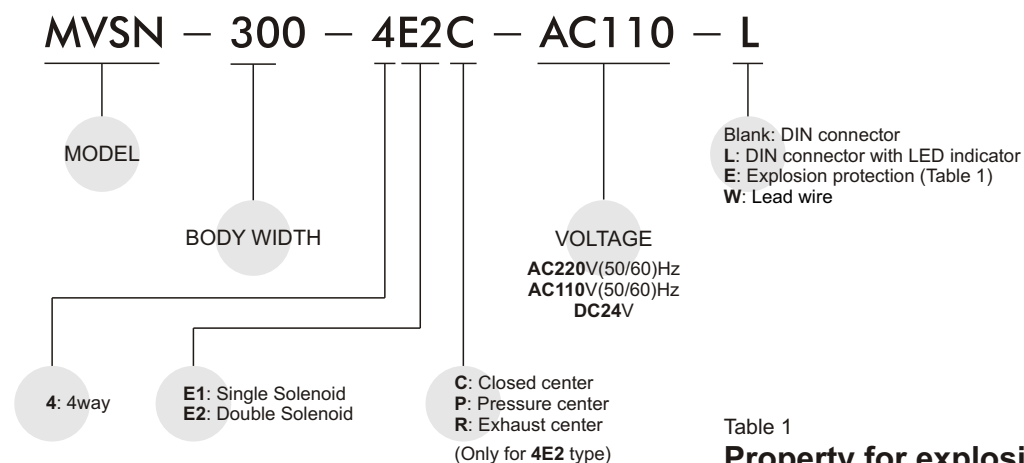
NAMUR SOLENOID VALVE



Specification:

Model	4E1	4E2	4E2C.P.R.
Bore No.	8A		
Port size	G 1/4 (port P, R1, R2)		
No. of port	5		
No. of position	2	2	3
Medium	Air		
Operating pressure range	2~7 kgf/cm ²		3~7 kgf/cm ²
Proof pressure	10.5 kgf/cm ²		
Effective orifice	35 mm ²		30 mm ²
Response time	50 ms		
Ambient temperature	- 5~ + 50°C (No freezing)		
Voltage	AC110V, 220V (50/60)Hz, DC24V		
Power consumption	AC=6/4.9VA, DC=2.5W		
Available voltage range	± 10%		
Insulation class	F class		
Weight	422 g	507 g	764 g

Order example of valve:



Order example of adapter:



Table 1

Property for explosion-proof type

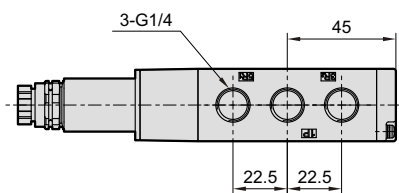
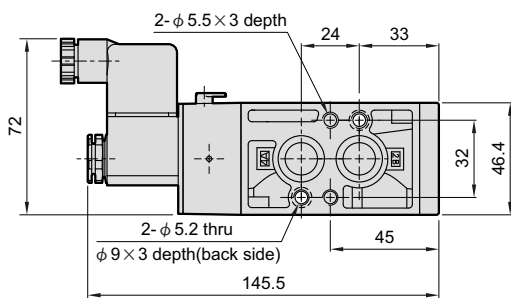
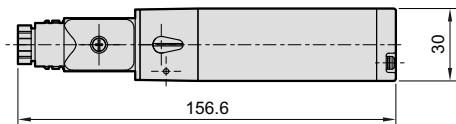
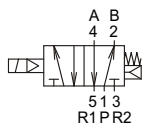
Anti-explosion class	EEx m II T4
Voltage	AC110V, 220V, (50/60)Hz, DC24V.
Power consumption	AC=4.4VA DC=5W
Available voltage range	± 10%
Insulation class	F class

MVSN-300 Dimensions

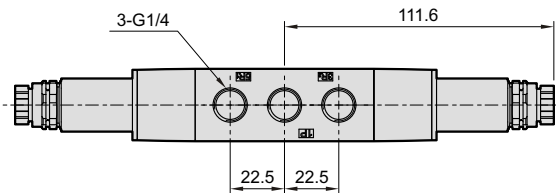
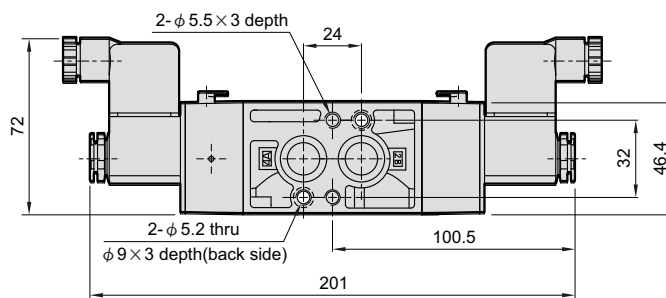
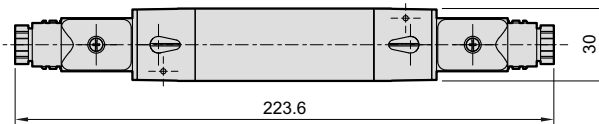
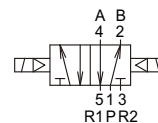
NAMUR SOLENOID VALVE



MVSN-300-4E1



MVSN-300-4E2

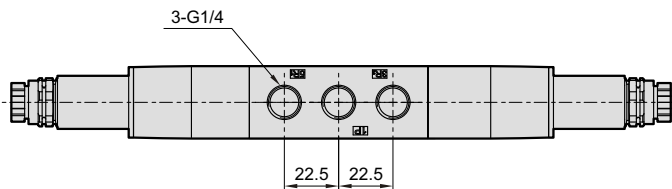
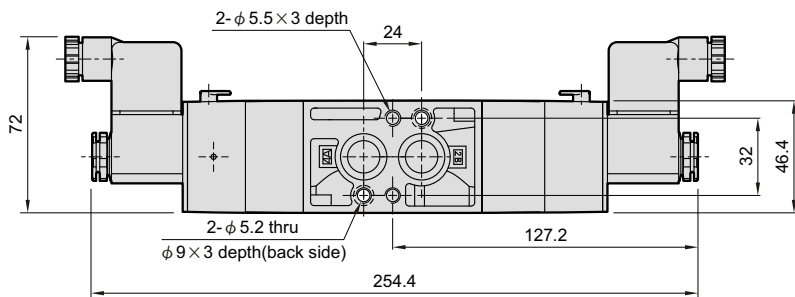
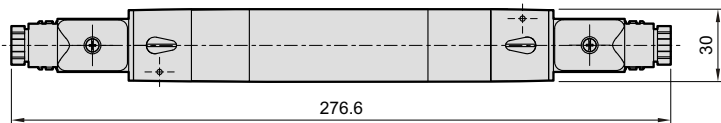
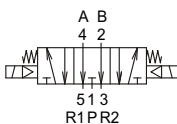
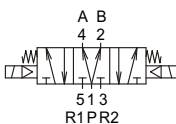
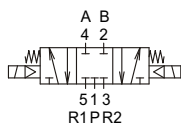


MVSN-300-4E2C.PR

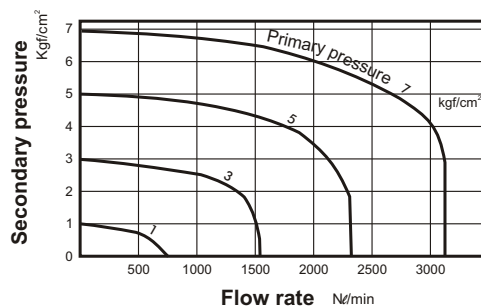
MVSN-300-4E2C

MVSN-300-4E2P

MVSN-300-4E2R



Flow features:

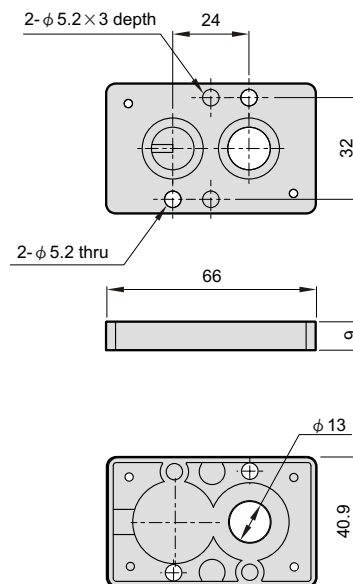
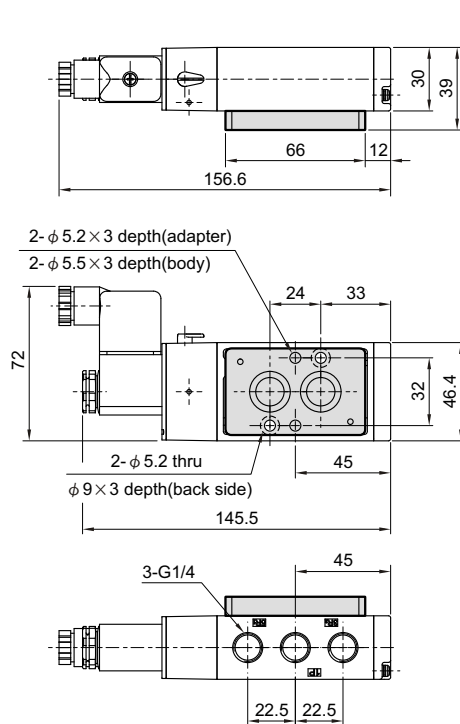


MVSN-300 Adapter

NAMUR SOLENOID VALVE



MVSN-300-A



- Solenoid valve without adapter : 5/2 single acting
- Solenoid valve with adapter : 3/2 single acting
- Silencer on the OPPOSITE side of the solenoid : NC
- Silencer on the SAME side of the solenoid : NO

