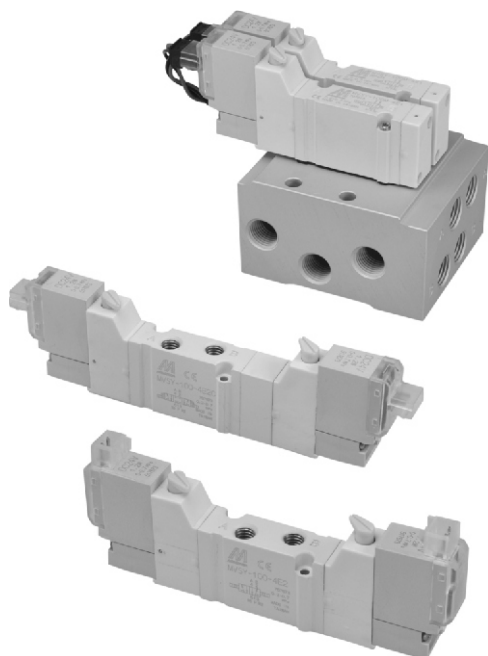


MVSY-100 series

SOLENOID VALVE



Specification:

| Model | MVSY-100-4E1,4E2 | MVSY-100-4E2C.P.R |
|--------------------------|---|-------------------|
| Bore No. | M5 | |
| Port size | M5 × 0.8 | |
| No. of port | 5 | |
| No. of position | 2 | 3 |
| Medium | Air | |
| Operating pressure range | 2~7 kgf/cm ² | |
| Proof pressure | 10 kgf/cm ² | |
| Effective orifice | 4 mm ² | |
| Response time | 12 ms | 15 ms |
| Ambient temperature | +5~+50°C | |
| Voltage | AC110V, AC220V (50/60)Hz, DC6/12/24V | |
| Power consumption | AC=1.6 / 2.5VA, DC=1.2W (LED indicator) | |
| Available voltage range | ± 10% | |
| Insulation class | B class | |
| Weight | 30g, 43g | 55g |

Order example of valve:

MVSY – 100M – 4E2C – AC110 – LJ

MODEL

BODY WIDTH

VOLTAGE

AC110V(50/60)Hz
AC220V(50/60)Hz
DC6V
DC12V
DC24V

Blank: Body ported type
M: Manifold type

4: 4way

E1: Single solenoid
E2: Double solenoid

C: Closed center
P: Pressure center
R: Exhaust center
(Only for 4E2 type)

Order example of bracket:

MVSY – 100 – 1A

PLUG TYPE

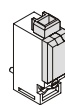
LJ : Plug on side (※1)



LR : Plug on side (※2)

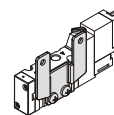


SR : Plug on top (※2)

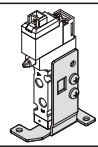


MOUNTING BRACKET

1A



2A



(※1): Connector with flying leads JPC type.

(※2): Connector with flying leads RMH type. (Original)

Order example of manifold:

MVSY – 100M – 5M3

MODEL

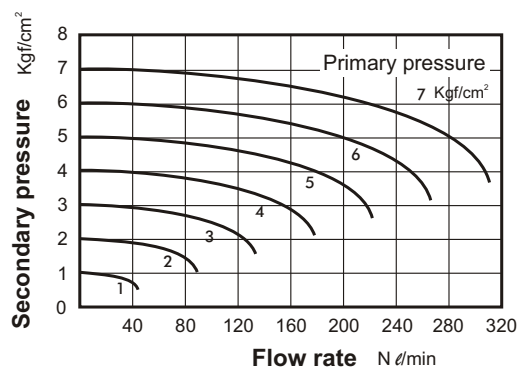
Blank: Body ported type
M: Manifold type

MANIFOLD NUMBER
1, 2, 3...

MANIFOLD

5B: for body ported type
5M: for manifold type

Flow features:

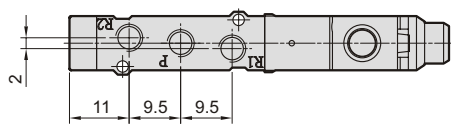
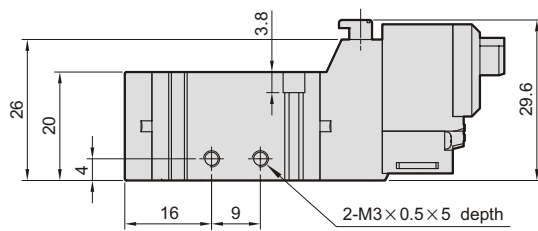
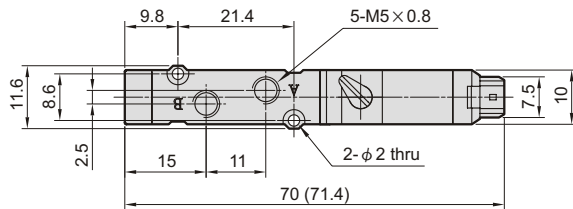
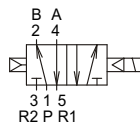


MVSY-100 Dimensions

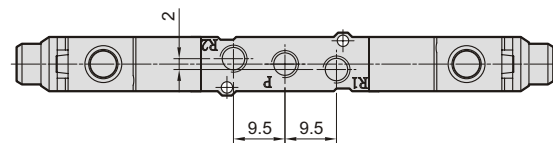
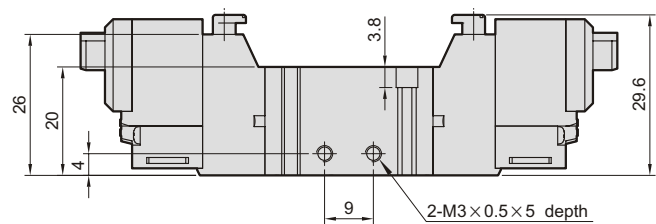
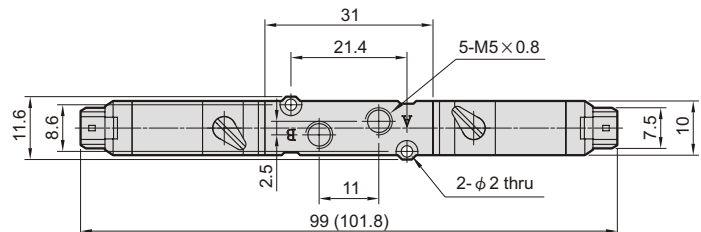
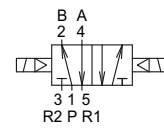
SOLENOID VALVE



MVSY-100-4E1



MVSY-100-4E2

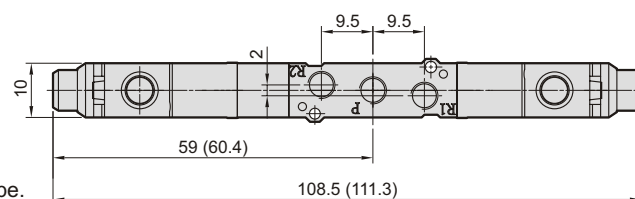
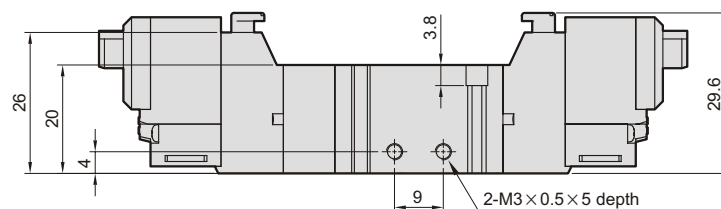
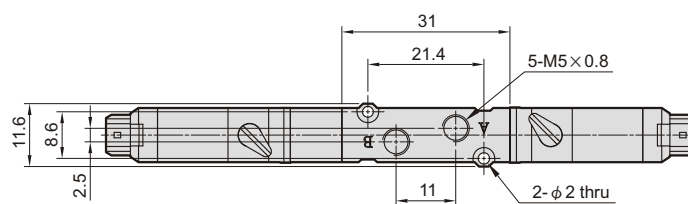
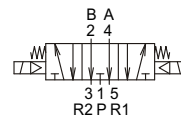
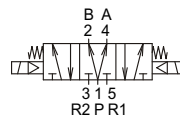
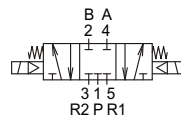


MVSY-100-4E2C.P.R

MVSY-100-4E2C

MVSY-100-4E2P

MVSY-100-4E2R



(): Dimension for LJ plug type.

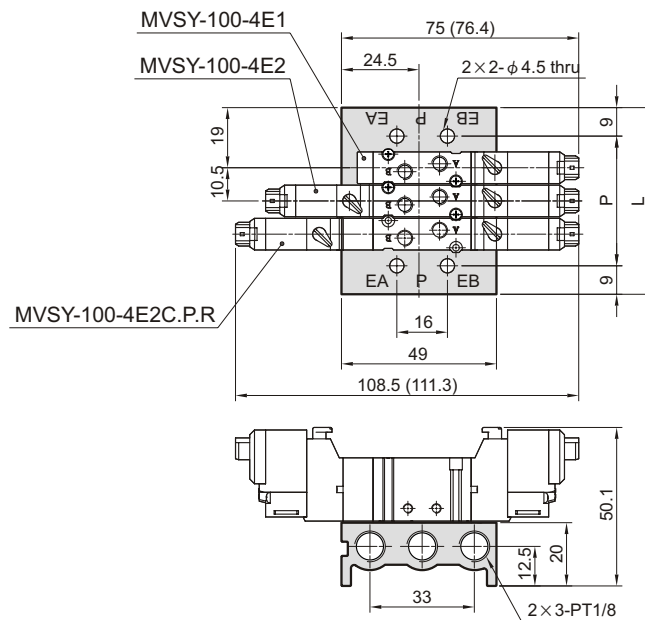
MVSY-100 Manifold

SOLENOID VALVE



MVSY-100-5B*

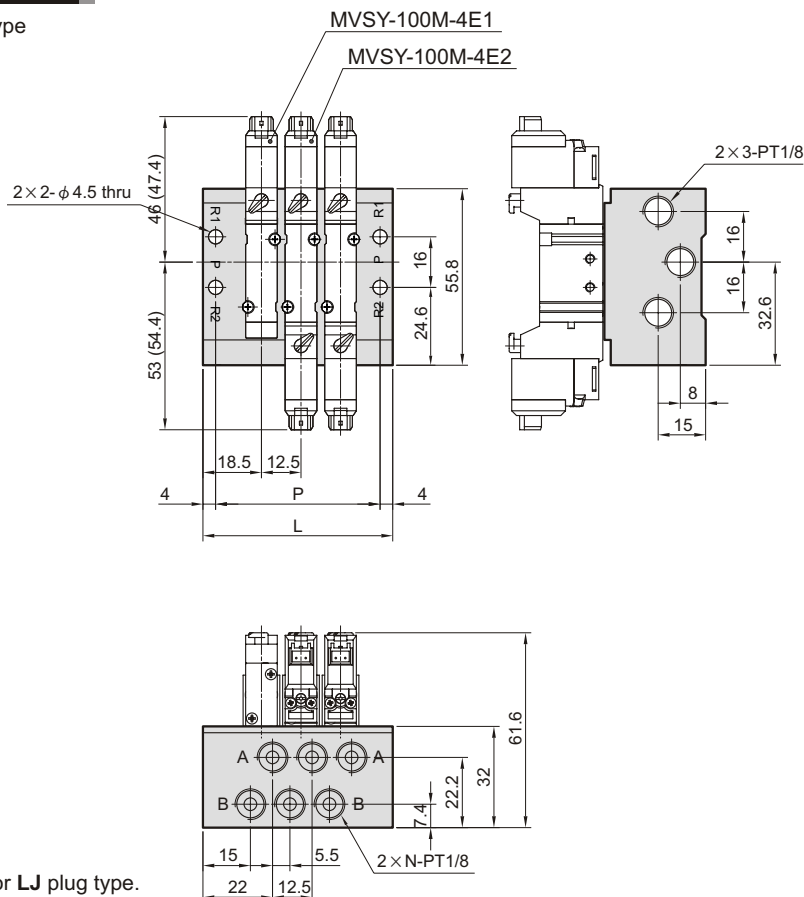
for body ported type



| No. of stations (N) | P | L |
|---------------------|-------|-------|
| 2 | 30.5 | 48.5 |
| 3 | 41 | 59 |
| 4 | 51.5 | 69.5 |
| 5 | 62 | 80 |
| 6 | 72.5 | 90.5 |
| 7 | 83 | 101 |
| 8 | 93.5 | 111.5 |
| 9 | 104 | 122 |
| 10 | 114.5 | 132.5 |

MVSY-100-5M*

for manifold type



| No. of stations (N) | P | L |
|---------------------|-------|-------|
| 2 | 39.5 | 47.5 |
| 3 | 52 | 60 |
| 4 | 64.5 | 72.5 |
| 5 | 77 | 85 |
| 6 | 89.5 | 97.5 |
| 7 | 102 | 110 |
| 8 | 114.5 | 122.5 |
| 9 | 127 | 135 |
| 10 | 139.5 | 147.5 |

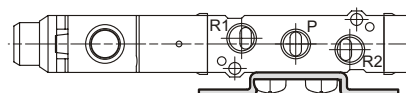
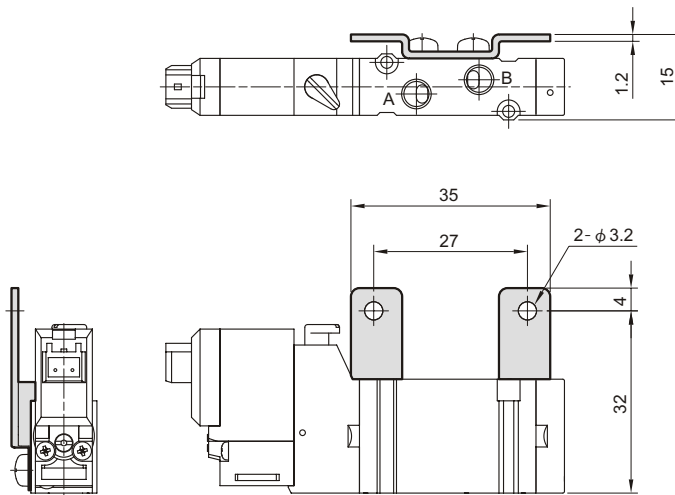
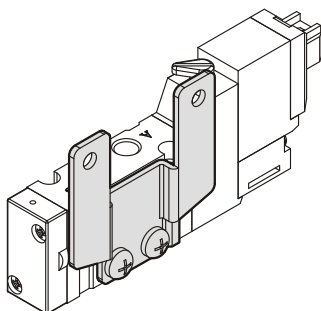
(): Dimension for LJ plug type.

MVSY-100 Mounting bracket

SOLENOID VALVE



MVSY-100-1A



MVSY-100-2A

