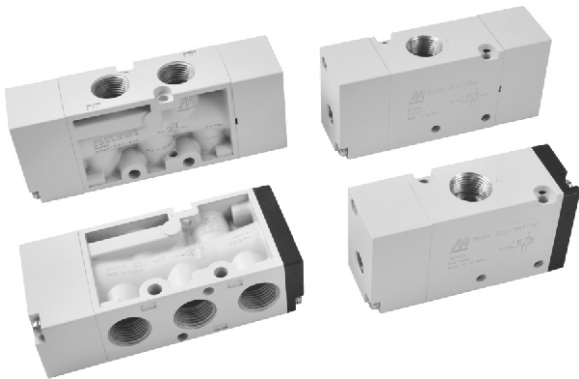


MVAA-300 series

PILOT VALVE



Specification:

Model	MVAA-300-3A1,A2	MVAA-300-4A1,A2	
Bore No.	10A		
Port size	PT 3/8		
No. of port	3	5	
Medium	Air		
Operating pressure range	0~8 kgf/cm ²		
Proof pressure	10 kgf/cm ²		
Effective orifice	35 mm ²		
Pilot pressure range	2~7 kgf/cm ²		
Ambient temperature	-5~+60°C (No freezing)		
Weight	295 g	324 g	236 g 301 g

Order example:

MVAA - 300 - 4A2 - NC - BSP

MODEL

BODY WIDTH

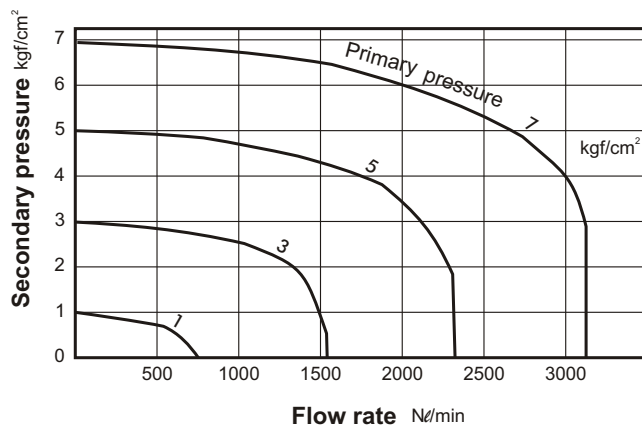
3: 3way
4: 4way

A1: Single pilot
A2: Double pilot

NC: Normally closed
NO: Normally open
(Only for 3A1 type)

PORT THREAD
Blank: PT thread
BSP: BSP thread
NPT: NPT thread

Flow features:

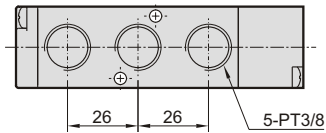
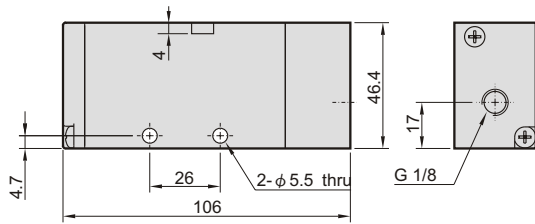
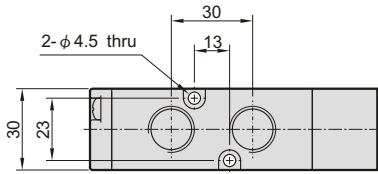
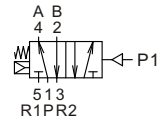


MVAA-300 Dimensions

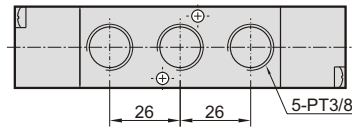
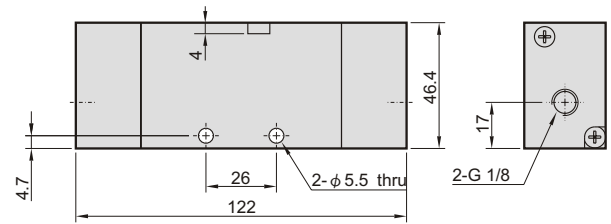
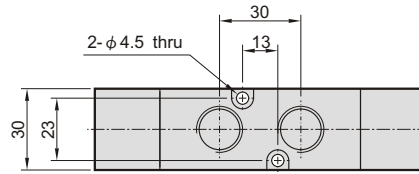
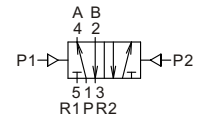
PILOT VALVE



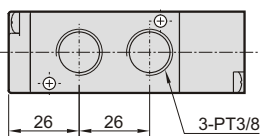
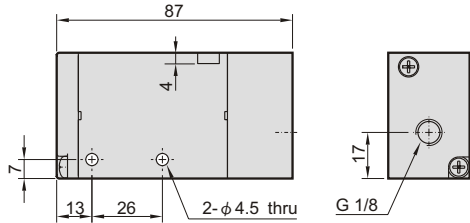
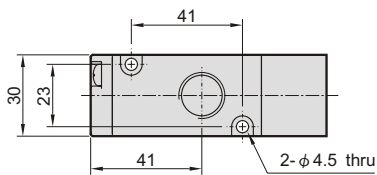
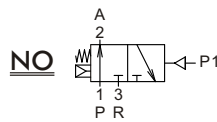
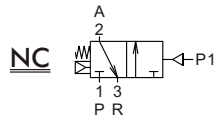
MVAA-300-4A1



MVAA-300-4A2



MVAA-300-3A1-NC/NO



MVAA-300-3A2

