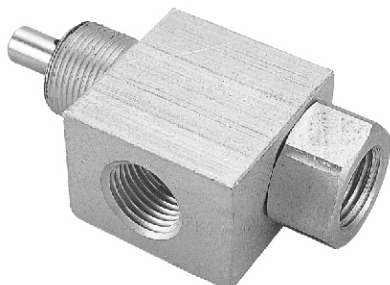


# MVHF-2P/3P-NC

HAND VALVES

# MVHF-3P-NO

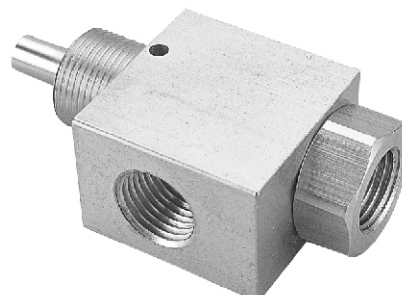
HAND VALVES



## Specification:

Type	normally CLOSED 3-way poppet
Medium	Air
Stem travel	1/8"
Input pressure	150 psig max.
Effective orifice	7.2 mm <sup>2</sup>
Force for full stem travel	38 oz. nominal
Temperature range	32°F ~ 230°F
Ports	Input: 1/8" BSP Output: 1/8" BSP
Exhaust	Hole to atmosphere
Mounting	15/32-32 male thread nuts and lock washers furnished
Weight	65 g

※Port thread NPT. are also available.



## Specification:

Type	normally OPEN 3-way poppet
Medium	Air
Stem travel	1/8"
Input pressure	150 psig max.
Effective orifice	5.7 mm <sup>2</sup>
Force for full stem travel	38 oz. nominal
Temperature range	32°F ~ 230°F
Ports	Input: 1/8" BSP Output: 1/8" BSP
Exhaust	Hole to atmosphere
Mounting	15/32-32 male thread nuts and lock washers furnished
Weight	69 g

※Port thread NPT. are also available.

