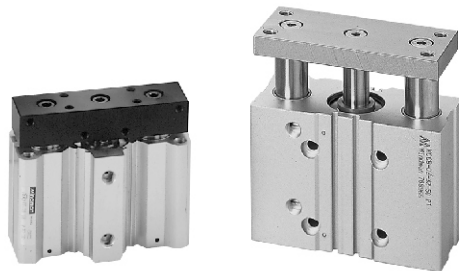


MCG* series Stop / Lift / Push

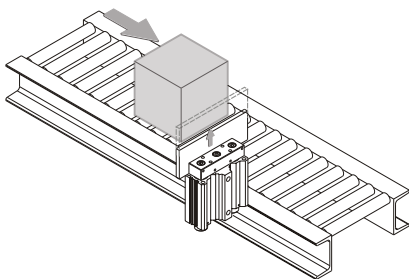
TWIN-GUIDE CYLINDER



Several uses

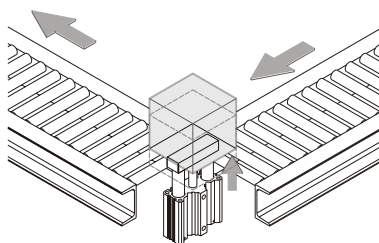
- S-Stopper cylinder: Takes very high lateral loadings as such can stop very wide and heavy objects.
- L-Lift cylinder: Large bearing area enables heavy off-set loads to be applied.
- P-Pusher cylinder: Long strokes available with extremely rigid guidance, precise movement of load is possible.

S Stopper cylinder



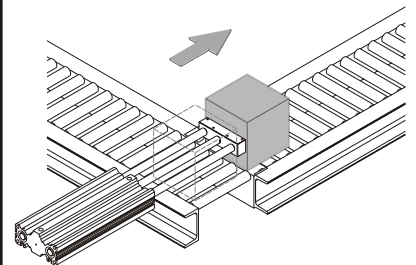
Tough type of stopping a large-load work carrier at a fixed point, and for the straggle of a number of work carriers, etc.

L Lift cylinder



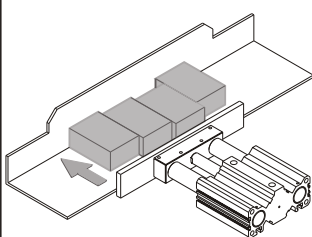
Special design which stands the large one-sided load. Lifts the work carrier at a fixed point not changing the posture.

P Pusher cylinder



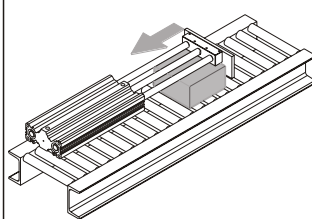
Long strokes available, the highly precise pushing work transfers and places a work carrier and changes the direction.

Multi-Purpose



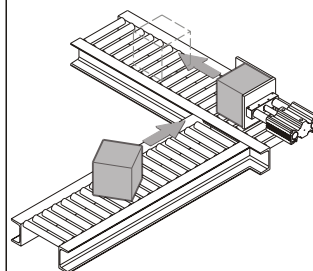
Arranges in line

Can move loads into a parallel position from different start points.



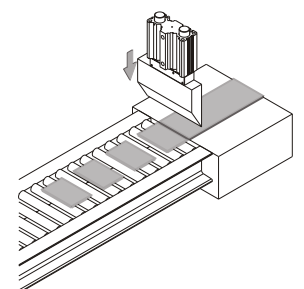
Draws in

Can move high loads consistently on the inward stroke of the cylinder.



Corrects misalignment

Repositions uneven loads.



Cuts sheets

Can be use as the power source for cutting sheets on a shearing machine.