

## How to Order

K E 5 10 - Y - A12

①                      ②                      ③                      ④

### ① Buffer style

E	External spring
I	Built-in spring

### ② External spring buffer stroke

10
20

### Built-in spring buffer stroke

R, B	06、10、25
E, S	
V type	07、15、20

### ③ Vacuum entry-External spring connection

Nil	Standard
Y	Pipe connector

### Built-in spring connection

Nil	Standard	
V	Female thread	
R	B	Refer to the outline dimension
E	S	

### ④ Mounting connection-male thread

Symbol	Male thread	Indent HEX
A8	M8x1	12
A10	M10x1	14
A12	M12x1	14

Remark: Vacuum pad port connection type

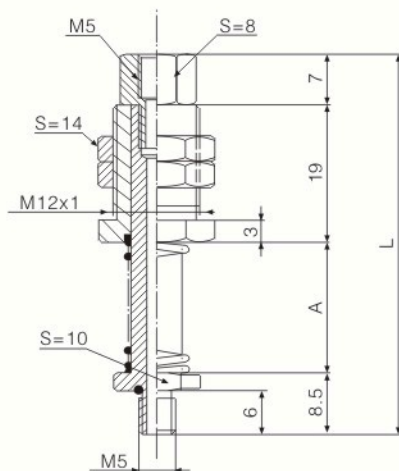
Model	Suitable vacuum pad model
R type	SB6X、SU1.5X、SU2X、SU4X
B type	SU10(15)、SF15、SB10(12、15)
E type	SU4(6、8)、SB5(8)
S type	SU2(3)



## Features

- ☆ With buffer spring, it can adjust height differences automatically when transfer the objects with height differences.
- ☆ Various connection thread and different stroke, it is suitable for standard vacuum pad. Wide applications.
- ☆ Touch with the fragile workpiece flexibly, buffer the impact to the object.

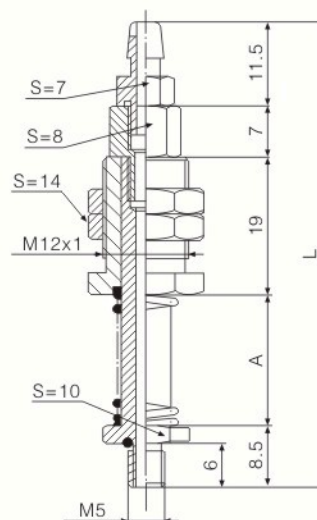
## Dimensions (mm)



**KE5 10 -A12**

(mm)

Buffer stroke	A	L
10	18	53
20	28	63



**KE5 10 -Y-A12**

(mm)

Buffer stroke	A	L
10	18	64
20	28	74

TXC

SB

SBF

SBL

SF

SU

SFP

SBP

SXP

AZP

AZPT

AZPR

PA

PC

PF

PJ

PJG

PS

PU

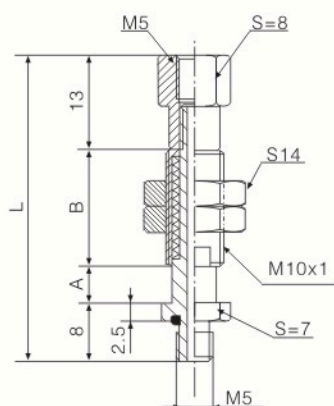
K

Fittings for  
Vacuum Pads

BH

Bulkhead  
Connector

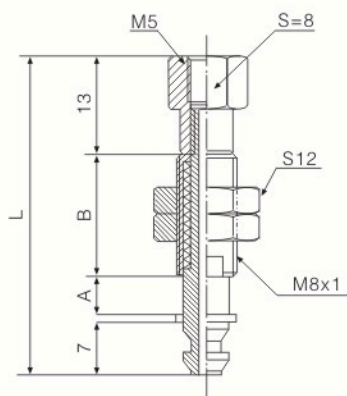
Ball Joint



**KI5 06 -A10**

(mm)

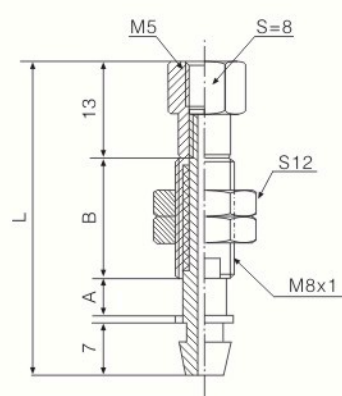
Buffer stroke	A	B	L
6	6	15	42
10	10	44	75
25	25	44	90



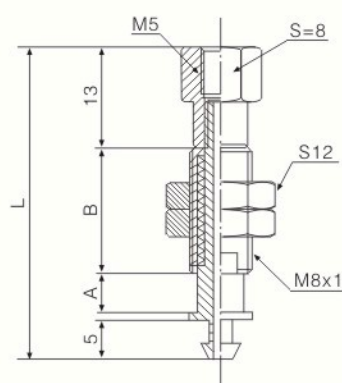
**KI5 06 -R-A8**

(mm)

Buffer stroke	A	B	L
6	6	15	42
10	10	44	75
25	25	44	90



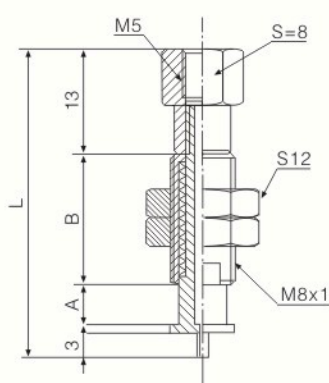
**KI5 06 -B-A8**



**KI5 06 -E-A8**

(mm)

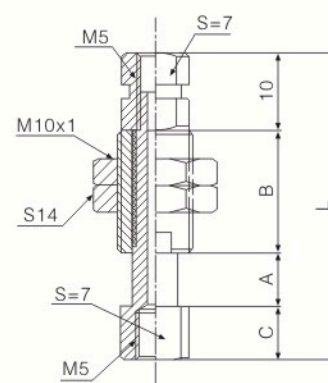
Buffer stroke	A	B	L
6	6	15	40
10	10	44	73
25	25	44	88



**KI5 06 -S-A8**

(mm)

Buffer stroke	A	B	L
6	6	15	38
10	10	44	71
25	25	44	86



**KI5 15 -V-A10**

(mm)

Buffer stroke	A	B	C	L
7	7	19	7	43
15	15	23	27	75
20	20	36	7	73

S:Width across flats