

Features

- ☆ Adjustment and fixing with ball clamp. Flexible use, rapid changing short set-up times.
 - ☆ Adjustable height and inclination. Flexible adaptation to work pieces with, for example curved metal sheets(car bodywork parts)
 - ☆ Suitable for mounting on square and round tubes. For universal use
 - ☆ Vacuum pads can be screwed directly into the G1/4" thread.
- Quick and cheap construction of a load cross-beam.

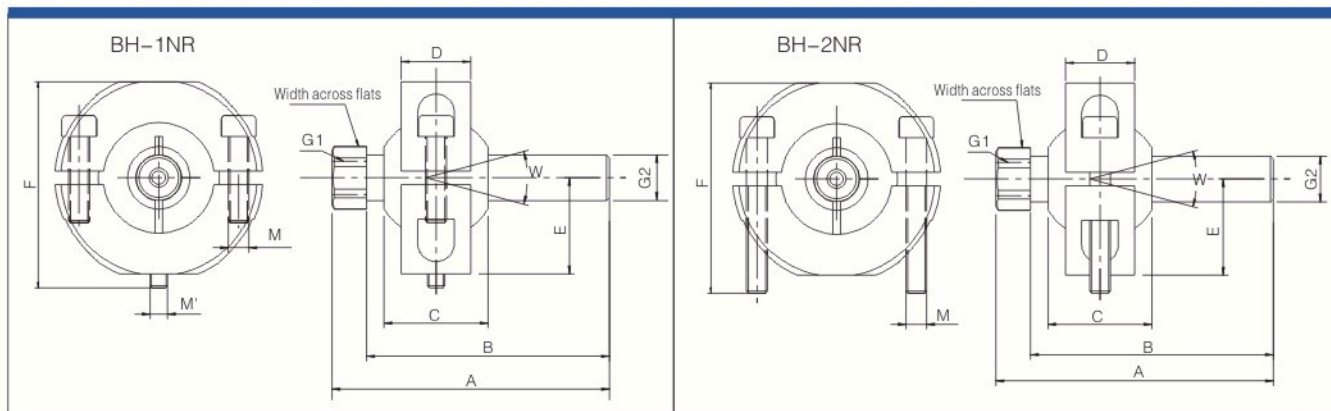


How to Order

Model	Ordering Code
BH-1NR	13.012.0001
BH-2NR	13.022.0001
BH-STB	13.030.0001
BH-STC	13.032.0001
BUCHSE-PA	13.025.0001

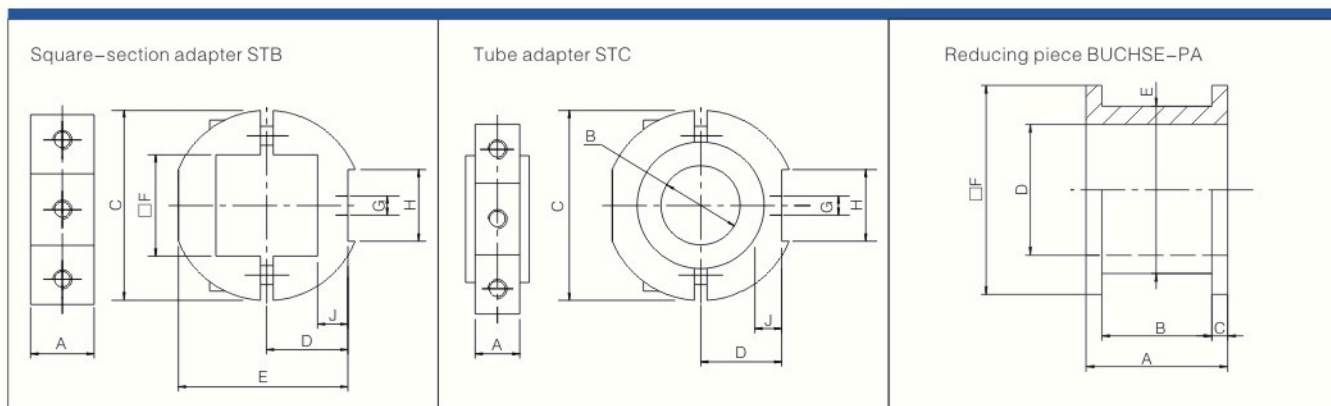
BH-1NR=universal holder,consisting of holder tube,supporting rod,steering ball and inner hexagon screws.
BH-2NR=universal holder,consisting of holder tube,supporting rod,steering ball and 2 inner hexagon screws.

Dimensions (mm)



(mm)

Model	A	B	C	D	E	F	G1	G2	M	M'	W	S
BH-1NR	80	70	55.6	20	27.5	59.5	G1/8	G1/4	M6	M5	30°	17
BH-2NR	80	70	55.6	20	27.5	61	G1/8	G1/4	M6	-	30°	17



(mm)

Model	A	B	C	D	E	□F	G	H	J
BH-STB	20	-	58.9	25	52.5	30.5	M6	20.1	10
BH-STC	20	Φ32	58.9	25	-	-	M6	20.1	12
BUCHSE-PA	27	21	3	25	32	40	-	-	-