

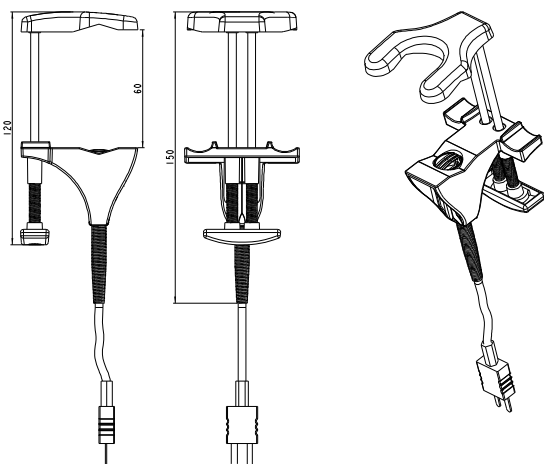


K thermocouple temperature probe with lamella contact and spring for pipes

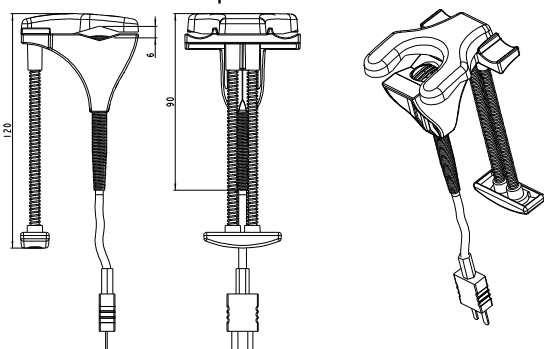
SKCT

Dimensions

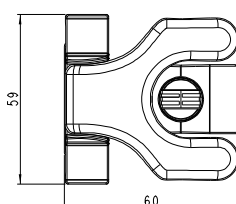
• Opened probe



• Closed probe



• On the top



Probe features

- Thermocouple type K class 1
- Measuring range from **-50°C to +250°C**
- Very fast response time

Technical features

Operating temperature.....from -50°C to +250°C

Accuracy.....± 1.5 °C

Pipes diameter.....from 10 to 60 mm

Storage temperature.....from -20°C to +80°C

Spring clip.....PA 6.6 + 30% glass silk, from -40 °C to +85 °C

Output.....by straight cable, 2 m length
Male miniature connector (standard)

Operating temperature
for cable (PVC).....120 °C

Application

- With **TK100** portable instrument

